



2017 Report to the Community



nextdoor

— Stronger Families Through Education —



Our Mission: Next Door supports the intellectual, physical and emotional development of children by partnering with their families for success in school and the community.



Doing The Most Important Work In Milwaukee

Dear Friends,

All children deserve a strong start to life.

At Next Door, we work hard – alongside our donors, volunteers and community leaders – to ensure Milwaukee children living in poverty get that strong start during the most critical period for their brain development, ages birth to three.

As we continue to learn more about the importance of early childhood education, we are inspired by the research. Just last year, Harvard University’s Center for the Developing Child released updated information showing that a child’s brain makes more than ONE MILLION new neural connections per second during the first few years of life.

We also continue to learn more about the impact of trauma on children living in poverty and how those adverse experiences can have an enormous impact on classroom performance and long-term success. We work closely with our teachers to build their knowledge and skills in this area so they can more effectively serve at-risk children and families.

To ensure our children and families get the services they need to succeed, our Board of Directors has spent more than 25 years investing in early childhood education in one of the highest-need areas of Milwaukee. Thanks to their service and leadership, we now serve nearly 2,000 children each year in Milwaukee’s central city through three center-based locations, ten partnership sites, and our home visitation program.

Our programming includes Wisconsin’s only Educare school – the nation’s best practice model for early childhood education. A 2017 academic research study, which included Next Door children, showed that after just one year of enrollment Educare students demonstrated stronger language skills, exhibited less challenging behaviors, and developed more positive parent-child interactions than children who did not attend Educare.

Today, we’re working to realign our organization as “One Next Door” by spreading the Educare model across all of our programming to ensure every child has the strongest start to life. This effort is a key part of our new strategic plan, which positions Next Door as the preeminent leader in early childhood education in Milwaukee.

We are so proud of the work our team does every day at Next Door. With your help, we are truly building a strong foundation for success. Thank you for helping us do the most important work in Milwaukee!

Bob VanHimbergen, CPA
Board Chair
Johnson Controls, Inc.

Tracey Sparrow, Ed.D.
President
Next Door

Next Door Board of Directors

Bob VanHimbergen, CPA, Chair
Johnson Controls, Inc.

Dan Sisel, Vice Chair
Berengaria Development –
A Marcus Family Company

Bradley Jansen, CPA, CFE, Treasurer
PricewaterhouseCoopers

Katherine Lambert, Secretary
Lambert Law, LLC

Tracey Sparrow, Ed.D., President
Next Door

Lynn Barney
Creative Insights Consulting, LLC

Angela Bier, M.D.
Pediatrician – Retired

Rebecca Cook
ManpowerGroup

Benjamin S. Cordani
Caterpillar Global Mining

Vicky Cordani
Community Advocate

Darrian Davis
Community Advocate

Robert Duncan
Children’s Hospital and Health System

Sadique Isahaku, Ph.D.
Milwaukee Area Technical College

Jason Klein
US Bank

Marge Laughlin
Elementary School Teacher – Retired

Jamie Morningstar
Milwaukee Bucks

Molly Mulroy
We Energies

Amy Rislov
Aurora Health Care, Inc.

Timothy G. Schaefer
Northwestern Mutual

Michael Shapiro
Option Care, Inc.

Alan R. Shoho, Ed.D.
University of Wisconsin – Milwaukee

Barbara Wanzo
Black Arts MKE

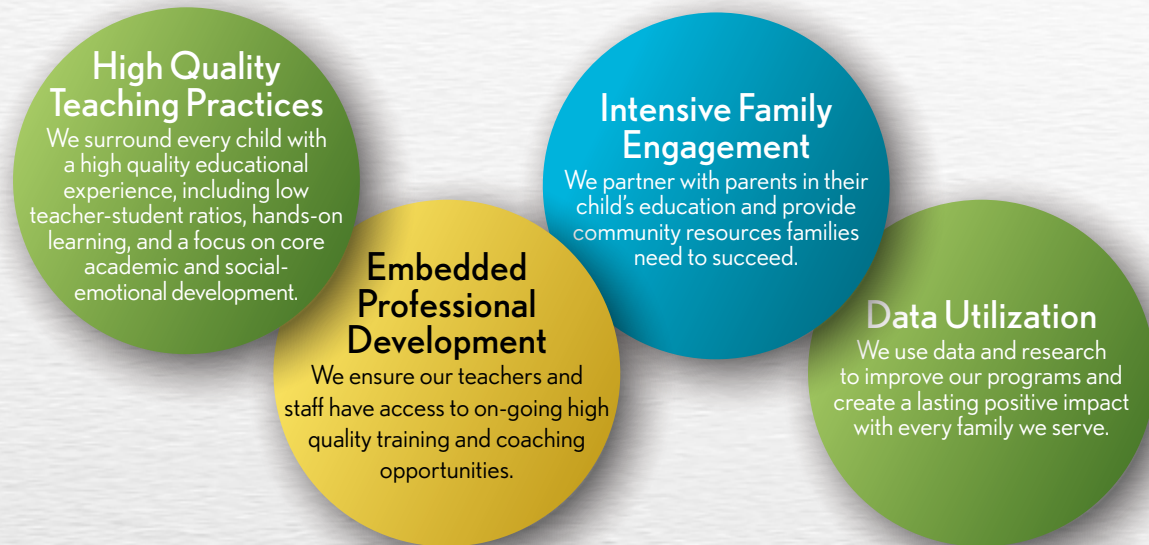


Since 2005, Next Door has operated Wisconsin's only Educare school – the nation's most effective early childhood education model. The Educare model features four core areas: high quality teaching practices, embedded professional development, intensive family engagement, and data utilization.

The powerful impact of this model inspired our recent effort to realign our organization as "One Next Door." Our goal is to spread the best practices of Educare across all of Next Door's programming for nearly 2,000 children.

In its *2017 Outlook - 2016 Recap Report*, the Buffet Early Childhood Fund reported that, "The national Educare evaluation has generated nine years of consistent findings: Children who otherwise might start school one or two years behind their peers leave Educare academically, socially, and emotionally prepared for kindergarten."

By utilizing this approach, we will ensure all of our students develop a love of learning, receive the appropriate support services they need, and are ultimately ready for school.



Next Door's Strategic Plan

We want to ensure the future of Next Door is just as bright as the futures we create for our children. In September of 2017, Next Door's Board of Directors approved a three year strategic plan to help build an even stronger Next Door for our community's children and families. This plan outlines five key positions that will guide us in this important journey.

Five Key Positions

- 1 Next Door will be recognized as the preeminent leader in early childhood education in Milwaukee.**
Next Door will become the community's leading authority on early childhood education for low-income children from birth to five years old.
- 2 Next Door will extend its reach through quality partnerships.**
Next Door will build strong partnerships in the community to both enhance the Next Door experience and extend it to peer organizations to increase access to high quality early childhood education in Milwaukee.
- 3 Next Door will maximize philanthropy to support our quality programming.**
Next Door will increase community support for our "One Next Door" initiative so every child receives the same high quality education across our entire range of programming.
- 4 Next Door will be the employer of choice among early childhood providers.**
Next Door will become the place where early childhood education professionals in Milwaukee want to invest their time, talent and expertise.

- 5 Next Door will leverage its assets to support the strategy.**
Next Door will leverage its assets to ensure functional and aesthetic improvements, which support effective teaching, enhance student outcomes, and further engage families in their child's education.



Our Community Partners

Educare Learning Network

The Educare Learning Network is a group of partners across the country, working together to offer low-income families a best practices model for early childhood education. The Buffett Early Childhood Fund and the Ounce of Prevention are two principal partners, along with 23 Educare schools nationwide. In addition to generous annual support, the Buffett Early Childhood Fund awarded Next Door with a special Acceleration Grant to help us utilize classroom teaching coaches more effectively.



Aurora Family Services

Aurora offers Next Door mental health services, including on-site therapy for children and parents, and staff training – all through a partnership with Milwaukee Public School's School Community Partnership for Mental Health.

The Baby Box Company

Next Door partners with The Baby Box Company as a distribution site for Baby Boxes, which can be used as a safe sleep space for a baby's first six months.

Children's Hospital of Wisconsin

Children's Hospital provides on-site nursing staff, an on-site clinic, and offered a Dental Day pilot program for students.

Lutheran Counseling & Family Services of WI

LCFS offered mental health services, including on-site therapy for students and parents.

Marquette University

Marquette researchers are studying the impact of a mindfulness program called *Calm Classroom* with our K4 and K5 students.



Milwaukee Area Technical College

MATC and Next Door are working to alleviate the national teacher shortage by adding a Child Development Associate, or CDA, credential training program to Next Door's Adult Education program.

Milwaukee County

The New Pathways for Fathers and Families program provided guidance to help dads be strong role models for their children.

Milwaukee Public Schools

Next Door operates a K4 & K5 Charter School in partnership with MPS, and also utilizes space in O. W. Holmes School for Head Start.

Milwaukee Succeeds

Next Door is part of the Early Childhood Social Emotional Development Network, which works to ensure all Milwaukee children have the resources needed for positive social-emotional development.

New Threads Of Hope

New Threads provides clothing and baby supplies for our students and families.

Nonprofit Center of Milwaukee

The center provides training and resources and helps promote Next Door volunteer programs.

ResCare Workforce Services

ResCare provides on-site assistance for our families and Adult Education students with services tied to employment and transportation.

Safe & Sound

Safe & Sound community organizers work with Next Door to improve public safety and quality of life in the Metcalfe Park neighborhood.

Social Development Commission

Through SDC'S Foster Grandparent Program, Next Door is expanding its volunteer base of older adults working with our students.

Sojourner Family Peace Center

Sojourner offers domestic abuse training and support for staff and parents, and provides our families with a community resource for shelter.

United Way of Greater Milwaukee and Waukesha County

United Way provides funding for our Adult Education program. In addition, United Way purchased new books for children and supplies for a 2017 summer reading program, featuring a 14-stop tour of Next Door's Books for Kids Mobile Library.

University of Wisconsin-Madison

The UW-Madison School of Medicine and Public Health assigned a TRIUMPH (Training in Urban Medicine and Public Health) student to evaluate the impact of literacy programs for children from birth to three.

University of Wisconsin-Milwaukee

UWM School of Education researchers work with Next Door's Educare school to conduct student assessments and collect data about the impact of Educare programming.

Wisconsin Literacy, Inc.

Wisconsin Literacy provides books, test vouchers, and staff training for our Adult Education program.

Child Care Partnership Program

Next Door is committed to increasing access to high quality infant and toddler (ages birth to 3) care in Milwaukee. We lead a federal grant program featuring a Child Care Partnership initiative with ten early learning organizations. Next Door has a team of instructional coaches who work closely with teachers at each site to raise the quality of learning and care through classroom strategies and professional development. This partnership program allows Next Door to directly reach 344 children – and indirectly impact 1,400 additional children – across 70 classrooms at the following organizations:



Community Accolades for Next Door

Next Door is gaining recognition for the value of our critical work in Milwaukee. Here's how we were recognized in 2017!

Harley-Davidson Healthy Citizenship Award

This award recognizes an organization or individual who is improving the health and wellness of the Milwaukee community. Next Door received the award at the YMCA's annual Dr. Martin Luther King, Jr. Celebration Breakfast.

Outstanding Community Partner Award

COA Youth & Family Centers recognized Next Door for its financial and instructional support from Next Door's Child Care Partnership program.

Nonprofit Collaboration of The Year Award

The Biz Times Nonprofit Excellence Awards honored Next Door for its leadership and the impact of its Child Care Partnership program.

Brewers "Beyond the Diamond" Program

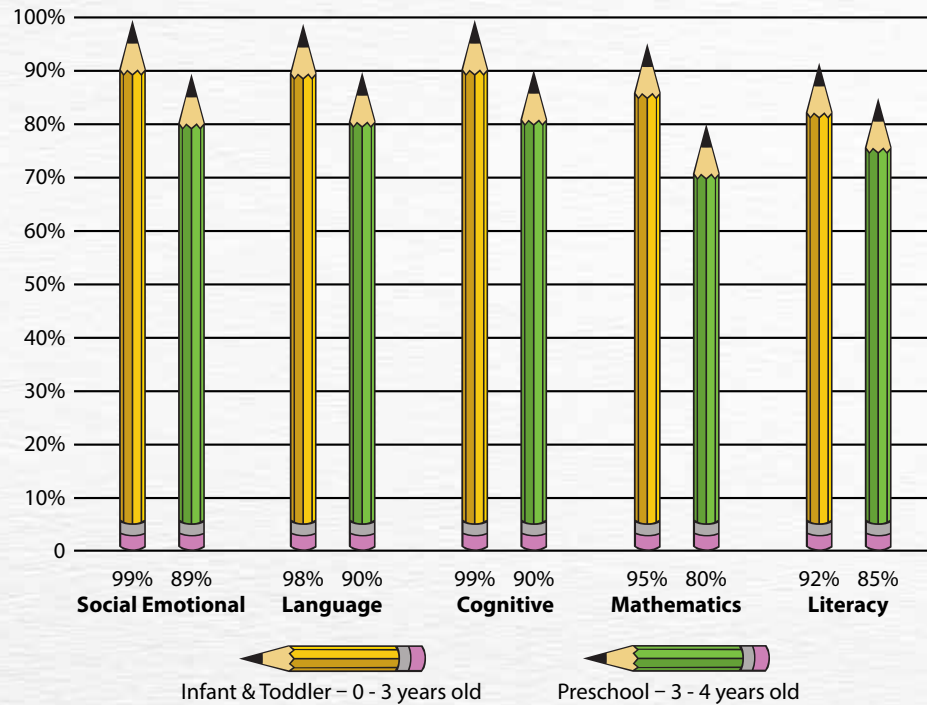
In June of 2017, the Milwaukee Brewers invited Next Door students to Miller Park for a bike build event with Master Lock, the Brewers Community Foundation and the Brewers Wives. The event was part of the team's "Beyond the Diamond" community initiative and included 100 free bikes built for Next Door students!



2016-2017 Program Outcomes

School Readiness Report

Early Head Start & Head Start
Children Meeting Developmental Benchmarks



In the 2016-2017 school year, students achieved up to 36% gains from fall to spring assessments in Mathematics and up to 30% gains from fall to spring assessments in Literacy.

2,102
Children Served

1,945
Families Served

91%
Children Served Live in Poverty

98%
Children with Medical Homes



In 2017, Next Door earned a five star rating – and its first perfect score – on the state’s YoungStar Child Care Rating Program. This milestone followed an annual review of Next Door’s 29th Street campus and marks the only perfect score for a child care program in Southeastern Wisconsin in YoungStar’s history.

A Bright Future Ahead Meet Jakisho and Alonzo

As a new mom juggling life as a single parent, Jakisho found Next Door to be just what she needed.

“Next Door was very open and welcoming and always willing to help. That was a blessing for me being a single mother, here by myself, first-time mom, first time sending my child off somewhere,” Jakisho said.

In 2012, Jakisho enrolled her three-year-old-son, Alonzo, at Next Door. She said early on there were some rough patches. Alonzo’s behavior wasn’t always the best and he struggled a little following directions.

“As he got older and started maturing and started being with Next Door teachers, he just caught on,” Jakisho said.

The academic growth came, too. In Alonzo’s three years at Next Door, there were annual milestones to report.

“In K3 he was already saying ABC’s and doing his 123’s. In K4 he was recognizing words, and by K5 my son was reading!” Jakisho said.

“It just made me feel so great as a parent, like I really accomplished something. I really made the right decision by sending him to Next Door and I’m just grateful for that.”

As she watched her son flourish, Jakisho found her path to success as parent – something she attributes to the supportive teachers at Next Door.

“They are there to help guide you and say, ‘Hey, maybe you should try this or do that,’ and I appreciated the advice because I didn’t know,” Jakisho said.

Alonzo is now in third grade at the Golda Meir School in Milwaukee. His mother reports he’s performing above grade level in both math and reading.

Outside of school, Alonzo is starting to model and act. In March, he had a small role in an episode of “Chicago PD” on NBC.

The Next Door team is so proud of Alonzo – and his mother – for how well they are doing today. And it’s nice to know that Next Door remains close to their hearts.

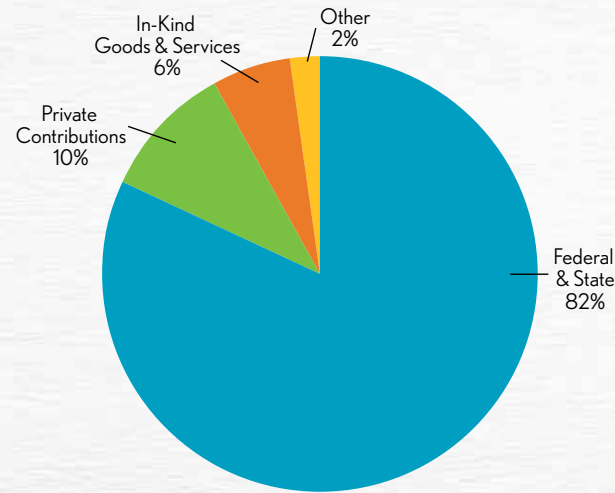
“If I hadn’t made the decision to send Alonzo to Next Door and waited until K5 to put him in school, he would not be at the level he is at now,” Jakisho said.



2016-2017 Financial Outcomes

2016-2017 Operating Revenue

Year Ended June 30, 2017

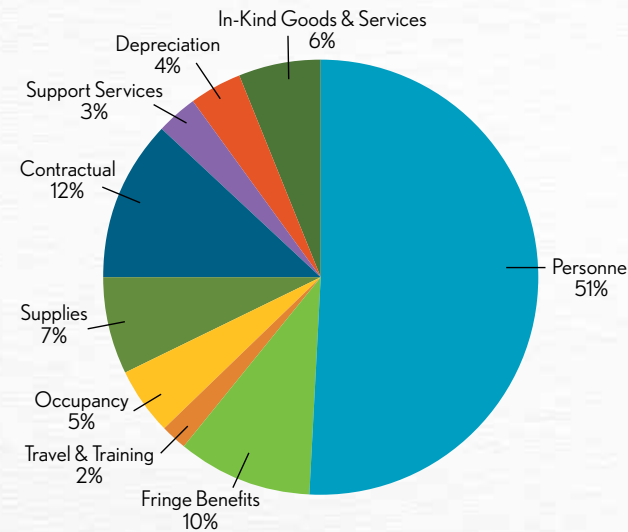


Operating Revenues	Amount	Percentage
Federal & State	21,002,662	82%
Private Contributions	2,648,075	10%
In-Kind Goods & Services	1,483,590	6%
Other	388,586	2%
TOTAL	\$25,522,913	100%

*2016-2017 figures represent audited financial statements.

2016-2017 Operating Expense

Year Ended June 30, 2017



Operating Expenses	Amount	Percentage
Personnel	12,979,748	51%
Fringe Benefits	2,531,870	10%
Travel & Training	428,386	2%
Occupancy	1,222,815	5%
Supplies	1,758,146	7%
Contractual	3,053,174	12%
Support Services	866,460	3%
Depreciation	998,728	4%
In-Kind Goods & Services	1,483,590	6%
Total Expenditures	\$25,322,917	100%



A New Lease On Life Meet Nicholas Howard

At 16 years old, Nicholas Howard remembers his life hitting “rock bottom.”

He faced bullying in high school, struggled with obsessive compulsive disorder and had such severe anxiety he was afraid to leave home.

“I pretty much told my mom that I was going to commit suicide if she made me go back to school,” Nicholas recalled.

Nicholas spent the next seven years barely leaving his apartment. Through a case manager and therapist, he discovered Next Door’s Adult Education program. With their support, he decided to give it a try.

Nicholas was 23 when he started his path toward a GED at Next Door. He said a welcoming staff made a tough transition easier to swallow.

“The staff here was very nice and they made me feel like I belonged and like I was part of a family,” Nicholas said.

Nicholas worked closely with Next Door instructors, Barry and Peter. They guided him through rounds and rounds of GED practice tests supplemented by tutoring from Next Door volunteers.

“This was one determined young man who showed up every day and gave his all to pass four GED exams,” Barry said.

Nicholas passed those exams in June of 2017. He received his high school diploma during a ceremony for GED graduates at Milwaukee Area Technical College – a moment he attributes directly to Barry and Peter.

“I look at them as mentors of mine because they always kept me on the path of getting my GED and they were always reminding me, this is what you need to do and we are here to help. That support – there is nothing like it,” Nicholas said.

Nicholas is now enrolled at Milwaukee Area Technical College. In two years, he hopes to transfer to the University of Wisconsin-Milwaukee to earn his bachelor’s degree.

“If all goes well, I’m thinking about getting a major in psychiatry because I’m considering becoming a therapist, and maybe a minor in animation,” Nicholas said.

Nicholas’ instructors at Next Door say he’s a new man.

“Nicholas now relishes conversation and interaction among his peers and instructors,” Peter said.

“Adolescent trauma that would have buried most of us was overcome by the resolve of Nicholas. Now, there’s no doubt that he will complete college and make a difference in the community,” Barry said.

Nicholas was one of **152** students served in Next Door’s Adult Education program, including **9** political refugees from Myanmar.

2016-2017 Books for Kids Outcomes

A record breaking year!

Throughout the year, Next Door's Books for Kids program collects donated books to help our students and children in the community build their home libraries and enjoy story time with family. Books are cleaned, repaired, sorted, and prepared for distribution by volunteers. The books are given to our students and the community through our Read with Me program, our Mobile Library, and our weekly Community Library.



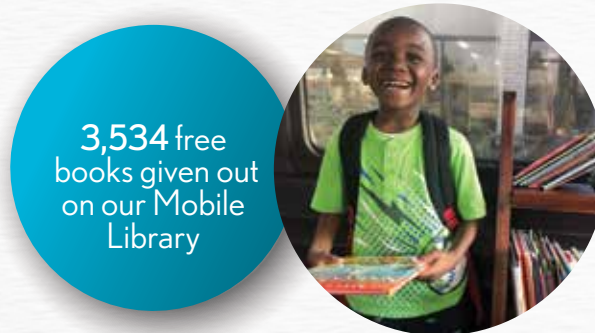
105,089 books donated by the community – the most ever in Books for Kids history!

135 book drives, up 46 from the prior year

5,500+ books distributed each month

Books for Kids Mobile Library

Thanks to a gift from the Harley-Davidson Motor Company, Next Door operates a Mobile Library that we take to our Child Care Partnership sites and to community events to give away free books.



3,534 free books given out on our Mobile Library

Read with Me

This program pairs volunteer readers with our students for one-on-one or small group story time in the library. Afterwards, the children select a free book to take home.



3,460 volunteer hours reading with our children

Giving Back Close to Home Meet Dr. Paula and Mark Rhyner

When Mark and Paula Rhyner decided it was time to retire from their long-time careers, they also decided volunteering together was going to be part of their next chapter.

The couple first considered an overseas trip to Africa to support a parish tied to their church. But then they realized they could make a greater difference close to home.

“We looked at each other and said, ‘Why do we have to go out of the country to do community service when there is such a need right here?’” Mark said.

Mark – a structural engineer for more than four decades – volunteers in Next Door's Adult Education program working with adult learners on science preparation for the GED test. One morning a week, he delivers PowerPoint presentations he develops at home and further engages students with individual tutoring.

“Because the students are all at slightly different skill levels, a lot of them really appreciate the one-on-one experience,” Mark said. “The more you work with them, the more they open up and talk to you about things well beyond what you're teaching them.”

Paula serves in a new role for Next Door – a Literacy Coach-in-Residence. She spent more than 30 years on the doctoral faculty of University of Wisconsin-Milwaukee, focused on early childhood education research and the role adults play in building early language and literacy development.



“In doing my research, I had to rely a lot on early childhood programs to let me come in and do my work,” Paula said. “Now that I'm retired, I feel like this is an opportunity to give back to the early childhood community.”

Paula comes to Next Door once a week and provides on-the-job coaching for teachers working to build early language and literacy skills in their classrooms. What she hopes to accomplish in the new year is expanding effective strategies to more parts of the daily routine and interweaving themes of the day from lesson to lesson.

“I like themes and I like tying activities together so that you are always reinforcing the themes for the children in so many different ways,” Paula said.

Both Paula and Mark are enjoying this rewarding start to retirement.

“It's a way of giving something relative to us that is right here, right now, and to make a difference where we live,” Mark said.

Thank You!

Nearly 2,000 individuals volunteered more than 7,000 hours.

Thank You to our Donors

We deeply appreciate the generous gifts our donors have made to support Next Door's mission. We wish to recognize giving of \$500 and above between January 1 - December 31, 2017. For a complete donor listing, please visit NextDoorMKE.org.

\$100,000+

Bader Philanthropies, Inc.
The Buffett Early Childhood Fund
Greater Milwaukee Foundation
Anonymous Fund
Joseph and Vera Zilber
Family Foundation

\$50,000 - \$99,999

Diane and Tom Arenberg
Brady Corporation Foundation
Mrs. Joan E. Brengel
Harley-Davidson Motor Company
The Richard and Ethel Herzfeld
Foundation
Mary and Ted Kellner
Northwestern Mutual Foundation
United Way of Greater Milwaukee and
Waukesha County

\$25,000 - \$49,999

A.O. Smith Foundation
Mr. and Mrs. Donald Baumgartner
Joan and Fred Brengel
Family Foundation
Four-Four Foundation
The Harley-Davidson Foundation
Helwig Carbon Products
Ms. Joyce Koenitzer
Nicholas Family Foundation
Payne & Dolan, Inc.
Jane Bradley Pettit Foundation
Kathleen and Paul J. Roller
U.S. Bank Foundation

\$10,000 - \$24,999

American Family Insurance
Dreams Foundation
Dr. and Mrs. Fredrick C. Austermann
Dr. Isabel Bader
Mr. and Mrs. Steven G. Booth
Bradley Impact Fund
Brewers Community Foundation

Greater Milwaukee Foundation
Catherine and Walter Lindsay
Foundation Fund
Green Bay Packers Community
Partners Program, including
Boston Store
Hepburn "Bootstrap" Foundation, Inc.
Charles D. Jacobus Family Foundation
Dr. Sarah G. Joerres and
Mr. Jeffrey A. Joerres
Johnson Controls Foundation
William Stark Jones Foundation
Ladish Company Foundation
Mr. and Mrs. Steven Laughlin
Maihaugen Foundation
Matrix Foundation
George and Julie Mosher
Family Foundation
Marian and Bill Nasgovitz
Suzanne and Richard Pieper
PieperPower
Mr. and Mrs. John E. Schilfske
Mr. and Mrs. Roger H. Schroeder
Mr. and Mrs. Richard F. Teerlink

\$5,000 - \$9,999

Bostik, Inc.
Bremer Family Charitable Fund
Corporate Central Credit Union
Dollar General Literacy Foundation
Mr. Stewart C. Elliott
Ralph Evinrude Foundation
Executive Women International
Milwaukee Scholarship Program
Foley Family Foundation
Greater Milwaukee Foundation
Hope H. Anderson Fund for
Next Door Foundation
Richard & Barbara Weiss Fund
Mr. and Mrs. Peter Hitler
Kohl's Corporation
Mr. and Mrs. Matthew S. Levatic
Laurie and Mike Mahoney
ManpowerGroup
Mr. and Mrs. Gary A. Poliner
Mr. and Mrs. Jonas Prising
Stacey and Steven M. Radke
Rexnord Foundation Inc.
Mr. and Dr. Timothy G. Schaefer
Mr. and Mrs. Robert J. Schuemann
Bert L. and Patricia S. Steigleder
Charitable Trust
Summerfest Foundation
Brenda and Bob VanHimbergen
We Energies Foundation
Mr. and Mrs. James Ziemer

\$2,500 - \$4,999

Mrs. Joan Aker
Sally Jarrar Baumgartner
Mr. John S. Brandser
Mr. and Mrs. John M. Bremer
Mr. and Mrs. Thomas R. Butler
The Comfort Company, Inc.
Mr. and Mrs. Robert E. Duncan
Ms. Barbara McMath and
Mr. Robert Ferriday
William N. and Janice V. Godfrey
Family Foundation Trust
Greater Milwaukee Foundation
Burns-Schrader Family Fund
Evan & Marion Helfaer Foundation
Mr. and Mrs. B. Robert Kill
Mr. and Mrs. Jason Koenitzer
Kohl's Corporation
Marlo Foundation
Mr. and Mrs. Gregory C. Oberland
Mr. and Mrs. Larry Prochnow
Rexnord
Ms. Tchernavia Rocker
Gael and W. David Romoser
Mr. and Mrs. Michael Roos
Steven and Cecilia SaLoutos
Mr. and Mrs. Michael H. Shapiro
Mr. and Mrs. Earl Stintzi
Studio Gear LLC
Henry H. Uihlein Sr. & Marion
(Polly) S. Uihlein Foundation
Mr. and Mrs. John K. Wilson

Growing Circle

The Growing Circle is a group of loyal donors who generously donate \$1,000 and more annually, as well as regularly volunteer their time and advocate for Next Door's mission throughout the community.



\$1,000 - \$2,499

Mr. and Mrs. Michael Aldana
Linda and Barry Allen Foundation
Alper Services
Mr. and Mrs. Robert C. Arzbaecher
Lynn B. Barney Donor-Advised Fund
Ms. Diane Pellegrin and
Mr. Chris M. Bauer
Mr. John P. Baumgartner
Ms. Cindy Benning
Mr. and Mrs. Robert F. Benz
Dr. Angela Bier and Dr. Jimmy Kim
Mr. and Mrs. Brian J. Bloczynski
Brookbank Foundation
Mr. and Mrs. Peter W. Bruce
Mrs. Georgia Buchta
Mr. and Mrs. Bladen Burns
Ms. Erin Murray Butler
Ms. Lisa Cadotte and
Mr. Tony Milczarek
Mr. Michael G. Carter
CH2M HILL
Children's Hospital of Wisconsin
Clinicare Corporation
Ms. Juliet A. Conlon and
Mr. Ayad Kamal
Mary and James Conlon
Mr. and Mrs. Sean J. Cummings
Mr. and Mrs. Gloster B. Current, Jr.
Daniel and Mary Czarnecki
Ms. Marcia Rimai and
Mr. Daryl L. Dising
Mr. and Mrs. Thomas Doyle
Mr. and Mrs. Eric Elfner
Albert J. & Flora H. Ellinger Foundation
Mr. and Mrs. Robert W. Fouch
Heiner and Barbara Giese
Mr. and Mrs. Todd R. Gordon

Greater Milwaukee Association of
Realtors Youth Foundation
Greater Milwaukee Foundation
Dyar Fund
Lawlis Family Fund
Asher and Susan Nichols
Family Fund
Randall Family Fund
Elsa and Frank Sterner Family Fund
Mr. and Mrs. Michael C. Groth
Hammes Company
Johnson Controls
Mr. and Mrs. Gregory G. Johnson
Mr. and Mrs. Donald C. Kieffer
Marja and Jeff Koenitzer
Herbert H. Kohl Charities
Mrs. Julie A. Krey
Mr. and Mrs. William G. Krugler
Mr. and Mrs. Charles LaBahn
Mary Pauly Lacy Foundation
Katherine and Ian Lambert
Mr. and Mrs. James Levin
Mr. and Mrs. Nick G. Lochner
Mr. and Mrs. Joseph A. Mantoan
Mr. and Mrs. Charles Matthews
Mr. and Mrs. Robert McDonald
Mr. and Ms. Paul McGhee
Ms. Donna A. Faw and
Mr. Jay W. Miller
Dr. and Mrs. Edwin J. Montgomery, Jr.
Mr. and Mrs. Calogero Morgano
Mr. and Mrs. George A. Mosher
Ms. Molly A. Mulroy
North Shore Bank
North Shore Congregational Church
Park Bank Foundation
Mr. and Mrs. Bruce Pindyck
Ms. Maureen E. Post

The Thomas and Susan Quadracci
Family Fund Charitable Foundation
Ms. Margaret Raymond
Mrs. Ruth M. Ritter
Annette Mertens and Chris Rockwood
Mary and Dan Schroeder
Dr. Jane Hawes and
Dr. David H. Shapiro
Tracey and Geoff Sparrow
St. John Vianney Parish
Supporting Families Together
United Way of Metropolitan Chicago
Mr. Mark Vachalek
Ms. Thora M. Vervoren
Mr. and Mrs. Todd Wellentin
Mr. Craig Williams
Ms. Lindy Yeager and
Mr. John Florsheim
Nancy M. and Douglas M. Yeager
Family Foundation
Mrs. Sharon S. Ziegler
Ms. Bettie Zillman

\$500 - \$999

Mr. and Mrs. J. Harvey Allgood
American Endowment Foundation
Anthem
Mr. and Mrs. William R. Arpe
The Atkinson Ells Charitable Foundation
Bay View Christmas on KK
Mr. John A. Berg
Mr. and Mrs. Thomas M. Bolger
Mr. and Mrs. Paul J. Casper
Complete Benefits
Vicky and Benjamin S. Cordani
Mr. and Mrs. Francis R. Croak
Cristina and Jeffrey Crogan
Cross Management Services

Ms. Joanne Danforth and
Mr. Stewart A. Edwards
Ms. Kathleen L. Doherty
Mr. and Mrs. Carl Engelhardt
Mr. and Mrs. Mark D. Ernst
Mr. Michael Friederichs
Ms. Barbara N. Fuldner
The GE Foundation
Mr. and Mrs. Frederick L. Gettelman
Carole and Adam Glass
Charitable Gift Fund
Greater Milwaukee Foundation
Gwen and Bill Werner Fund
Bessie A. and Harold M.
Stratton Fund
Mr. and Mrs. Timothy Greene
Dr. Susan E. Gruber
Mr. and Mrs. Jon D. Hammes
Healthcare Business Insights
Mr. and Mrs. Edward Heiser
Dr. Marilyn B. Hintz
Mr. Robert A. Jansen
Ms. Samantha Grosby and
Ms. Darla Kashian
Mr. and Mrs. Steve Kavalasuskas
Mr. and Mrs. Alvin W. Keeley
Mr. and Mrs. Benjamin A. Kelly
Ms. Natasha King
Mr. and Mrs. Stephen E. Kravit
Mrs. Angela M. Lampkin
Mr. and Mrs. Arthur J. Laskin
Mr. and Mrs. Robert E. Long
Mr. and Mrs. John T. McGinnis
Mr. William J. McKearn
Mr. and Mrs. Yul McNair
MillerCoors
Mr. Darren J. Miller
Mr. John A. Olin

O'Neill Foundation
Steve and Sue Oswald
Peck Foundation, Milwaukee LTD
PricewaterhouseCoopers
Mr. Sean M. Rierdon
Mr. and Mrs. Paul A. Rix
Ms. Sheree Robertson
Mr. and Mrs. Steven J. Rolfe
Ms. Katherine D. Romanski
Mr. and Mrs. Rich Rovin
Mr. and Mrs. Mark P. Schueller
Ms. Yvette Gideon and
Mr. Rodger R. Sonneborn
St. Benedict the Moor Parish
Florence Steinberger
Dr. and Mrs. William Treichel
Tri City National Bank
Mark and Sue Umhoefer
Ms. Jennifer Verbigghe and
Mr. Chris Engelken
Waukesha County Community
Foundation - Waterstone Bank Fund
Mr. and Mrs. James B. Wigdale, Sr.
Mr. and Mrs. Willie A. Williams
Dr. and Mrs. James Willis
Mr. and Mrs. James Wolfenber



2017 Walk For Children

Green Bay Packers Davante Adams reads to children at the 2017 Walk for Children. More than 1,000 friends and families came together to support Next Door's largest event of the year and raised more than \$145,000 for Next Door's critical early childhood education programs. A special thanks to the Harley-Davidson Motor Company, which has been the presenting sponsor for the Walk since it started in 1989.

*Every effort has been made to ensure the accuracy of these lists. If you note an error, please accept our sincere apologies and inform the Development Office at 414.562.2929 x 2551.



A Tribute to Mary Conlon

Mary Conlon enjoys a visit with some students during her final year at Next Door.

Mary retired in May of 2017 after serving Next Door for 44 years. She began as a VISTA Volunteer in Next Door's home-based visitation program and later joined the agency full-time leading that program before joining the Development department in 1982.

In tribute to Mary's legacy at Next Door, donors contributed more than \$50,000 to officially name the "Mary Conlon Legacy Room" at Next Door's Capitol Drive site. We wish to thank all those who contributed.

In Honor of Mary Conlon

Mrs. Joan Aker
Diane and Tom Arenberg
Dr. and Mrs. Fredrick C. Austermann
Dr. Isabel Bader
Mr. and Mrs. John T. Bannen
Ms. Diane Pellegrin and
Mr. Chris M. Bauer
Mr. and Mrs. Donald Baumgartner
Mr. John P. Baumgartner
Ms. Cindy Benning
Mr. and Mrs. Robert F. Benz
Mr. John A. Berg
Ms. Lisa Berman
Ms. Deirdre M. Blackmore
Mr. and Mrs. Michael Brady
Bremer Family Charitable Fund
Mrs. Joan E. Brengel
Brookbank Foundation
Mr. and Mrs. Peter W. Bruce

Mrs. Georgia Buchta
Ms. Erin Murray Butler
Mr. and Mrs. Paul J. Casper
Ms. Juliet A. Conlon and
Mr. Ayad Kamal
Ms. Mara E. Conlon and
Mr. Troy Bynum and
Mr. and Mrs. Benjamin S. Cordani
Mr. and Mrs. H. Lou Davit
Mrs. Joan L. Deardorff
Ms. Kathleen L. Doherty
Mr. Mark J. Doherty
Ms. Joanne Engel and Mr. Ken Valdes
Ms. Barbara McMath and
Mr. Robert Ferriday
Mr. and Mrs. Michael O. Festge
Mr. Robert C. Fredrickson
Mr. and Mrs. Frederick L. Gettelman
Greater Milwaukee Association of
Realtors Youth Foundation

Greater Milwaukee Foundation
Burns-Schrader Fund
Randall Family Fund
Mr. and Mrs. Michael C. Groth
Dr. Susan E. Gruber
Mr. and Mrs. Jon D. Hammes
Ms. Linda M. Hansen
Mr. and Mrs. Edward Heiser
Dr. and Mrs. Michael A. Johnson
Mr. Ronald D. Jones
Dr. and Ms. Howard Kainz
Mary and Ted Kellner
Mr. and Mrs. Benjamin A. Kelly
Mr. and Mrs. Cory S. Kilsdonk
Ms. Natasha King
Marja and Jeff Koenitzer
Ms. Joyce Koenitzer
Mrs. Julie A. Krey
Mr. and Mrs. Steven Laughlin
Mr. and Mrs. Matthew S. Levatich

Mr. and Mrs. James Levin
Mr. and Mrs. Robert E. Long
Laurie and Mike Mahoney
Mr. and Ms. Paul McGhee
Mr. and Mrs. George A. Mosher
Mr. and Mrs. Dave Oxler
Suzanne and Richard Pieper
Stacey and Steven M. Radke
Rev. Barbara M. Rasmussen and
Rev. Robert R. Scheuermann
Mrs. Ruth M. Ritter
Ms. Sheree Robertson
Ms. Patricia Roehrig
Kathleen and Paul J. Roller
Mr. and Mrs. Michael Roos
Rev. and Mrs. Edward A. Ruen
Dr. Patricia Safavi
Steven and Cecilia SaLoutos
Dan and Mary Schroeder
Mr. and Mrs. Roger H. Schroeder

Ms. Debra Schwid
Ms. Penny Schwid
Tracey and Geoff Sparrow
Studio Gear LLC
Dr. and Mrs. William Treichel
Ms. Jennifer Verbrigghe and
Mr. Chris Engelken
Ms. Thora M. Vervoren
Mr. and Mrs. Willie A. Williams
Dr. and Mrs. James Willis
Mr. and Mrs. James Wolfenberger

Tribute Donations

Many donors make gifts in honor or in memory of those they care about. These gifts are a meaningful way to pay tribute to their values and to help children get a great start.

In Honor of Kay and Fred Austermann

Mr. and Mrs. Michael R. Brophy

In Honor of Paul and Helen Berberet

The Wilson/Berberet Family Gift Fund

In Honor of Howard and Jennie Chan

Dr. and Mrs. Carlyle H. Chan

In Memory of Joan Deardorff

Mary and James Conlon

In Memory of Donna DeWalt

Mr. and Mrs. Thomas Doyle

In Memory of Linda Dietrich

Mr. Scott B. Manske and
Ms. Laura J. Browne

In Memory of Herbert & Alina Ellis

Herbert and Alina Ellis Memorial Fund

In Honor of Dewayne Evins

Mr. Paul Barribeau

In Honor of Clementine Ferrara

Ms. Megan A. Lantz

In Memory of Andy Feiring

Florence Steinberger

In Honor of William Godfrey

Johnson Bank

In Memory of Norman Hintz

Dr. Marilyn B. Hintz

In Honor of Mary Kellner

Ms. Susan K. Apple

In Memory of Emma Holly Lankford

Ms. Lorraine Gardner

In Honor of Josh Parr

Ms. Kaye Leszczynski

In Memory of Tracy Pease

Mr. Jeffrey Newholm

In Honor of Lisa Pieper

Ms. Kaye Leszczynski

In Honor of Cash Renno

Farah Stephens

In Memory of Adeline Romoser

Romoser Charitable Fund

In Honor of W. David Romoser

Ms. Joan Kroboth

In Honor of Max Seigle

Mr. and Mrs. Michael Pollack

In Honor of Skygen USA Data Nerds

Jim and Jill Zeisler

In Honor of Eldon Swenson

Ms. Ingrid Swenson

In Memory of Henry and Marion Uihlein

Henry H. Uihlein Sr. & Marion
(Polly) S. Uihlein Foundation

In Honor of Dr. Greg Watchmaker

Dr. and Mrs. Edwin J. Montgomery

In Memory of Joan Whipp

Mr. and Mrs. Richard G. Adamson

Mr. and Mrs. John B. Auten

Ms. Nikki Battiste

Ms. Nancy J. Beyer

Terry Brecklin

Mr. and Mrs. Michael R. Brophy

Ms. Theresa Burant

The Burkart-Paulson

Mr. and Mrs. Stuart S. Carlson

Mr. and Mrs. Kelly Clark

Ms. Judith Davis

Ms. Barbara Dineen
Mr. Sean Dooley
Ms. Karen S. Evans
Mr. and Mrs. Bill Geddie
Ms. Kristine Gettelman
Ms. Ruth Hammond
Ms. Theresa Hammond
Taryn Hartman
Mr. William Henk
Mr. and Mrs. Richard M. Hillmann
Mr. and Mrs. Gary Houdek
Mr. and Mrs. Steve Kavalasukas
Ms. Mary Kramer
Mr. James Lathrop
Ms. Kirsten Lathrop
Mr. and Mrs. Mark W. Loomis
Mr. Edward Lopez
Marquette University
Mr. and Mrs. Michael McCauley
Mr. and Mrs. James T. McKeown
Ms. Courtney McNeal and
Mr. Johannes Anderson
Priscilla A. O'Neill
Mr. Thomas Pheister
Ms. Susan J. Ramsey
Mr. Carl Reinhold
Ms. Astrid Rodrigues
Mr. and Mrs. Robert F. Schmidt

Mr. and Mrs. Dennis Smith
Ms. Lizzie Sorenson
Mr. and Mrs. Thomas Stang
W.A. Jennaro Law LLC
Dr. Miriam Schechter and
Dr. David E. Weissman
Ms. Barbara A. Monroe and
Mr. Wayne Wendling
Ms. Virginia C. Whitcraft
In Honor of George and Irene Wilson
The Wilson/Berberet Family Gift Fund
In Honor of John Wilson
Mr. Eric M. Wilson
In Honor of John, Lisa and Alexis Wilson
Mr. and Mrs. James P. Wilson
In Memory of Cindy Zautcke
Mr. Michael J. Ostermeyer

Legacy Society

We thank the many generous donors who have included Next Door in their estate plan. Legacy gifts help ensure that Milwaukee children have the opportunity for future success.

Anonymous
Joan Aker
Hope H. Anderson*
Diane and Thomas Arenberg
Dr. Fred and Kay Austermann
John and Carol Bannen
Margaret I Bast*
Lisa Berman
Mrs. Franklin M. Buchta
Mary Conlon
Robert Ferriday
Dr. Susan E. Gruber
Virginia John
Darla Kashian
Al Keeley
Mary and Ted Kellner

Janice Klemz
Michael Klemz
Jason and Dawn Koenitzer
John* and Joyce Koenitzer
Judie Koenitzer McGhee
Kathy and Ian Lambert
Dick and Elaine Larsen
Jim and Camilla Levin
Bob and Patty Long
Donald K. Mundt
Joan Oppeneer*
James Oswald*
Suzanne and Richard Pieper
Larry and Jeanne Prochnow
Patricia Roehrig
Paul and Kathleen Roller

Gael and David Romoser
Rev. Edward A. and
Katie Ruen
Jennifer and Joseph Tate
Eileen* and Alex* Treis
Byron Tween*
Thora Vervoren
Jim and Gracia Willis
Bettie Zillman

*deceased





Young Professionals

A new generation of support for Next Door is on the rise and working to raise community awareness about the organization's critical early childhood education programs and family support services. The Next Door Young Professionals Group began in December 2016 and works on programs to engage young professionals in volunteering and philanthropy for Next Door. We thank them for their advocacy and support over the past year.

2017 Members

- Justin Baker**
Milwaukee Bucks
- Elizabeth Dixon**
Aurora Health Care, Inc.
- Jennifer Hays**
US Bank
- Anna Jenison**
PricewaterhouseCoopers
- Mackenzie Johnson**
UMB Fund Services
- Tara Jordan Peterson**
IDM Hospitality
- David LeGrand**
Green Bay Packers
- Rebecca McCartney**
North Shore Bank
- Marie McFarland**
Northwestern Mutual
- Martha Mohelnitzky**
Reinhart Boerner Van Deuren
- April Rechlitz**
Harley-Davidson Foundation
- Kim Workman**
Quorum Architects

Next Door Committees

Next Door is led by a team of volunteers who serve on committees of our Board of Directors. These committees discuss initiatives and advancements that will lead Next Door long into the future. We thank our 2017 committee members for their significant contribution of time and expertise to our efforts.

Board Officers

Jan.-Sept. 2017

- Thomas Arenberg, Chair
- Bob VanHimbergen, CPA,
Vice Chair
- Bradley Jansen, CPA, CFE,
Treasurer
- Dan Sisel, Secretary
- Tracey Sparrow, President

Advancement Committee

- Vicky Cordani, Chair
(Oct. 2017-present)
- Hans Kirkegaard, Chair
(Jan.-Sept. 2017)
- Edie Brengel Radtke
- Sadique Isahaku, Ph.D.
- Usamah Loveless
- Jamie Morningstar
- Tina Serser
- Craig Williams

Board Development Committee

- Amy Rislov, Chair
(Oct. 2017-present)
- Lorelle Mahoney, Chair
(Jan.-Sept. 2017)

Endowment Committee

- Katherine Lambert, Chair
- Kay Austermann
- Robert Ferriday
- Doris Heiser
- Noleta Jansen
- J. Bary Morgan
- Jennifer Verbrigghe

Finance & Administration Committee

- Bradley Jansen, CPA, CFE, Chair
- Thomas Arenberg
- Hans Kirkegaard
- Jason Klein
- Rob McDonald
- Timothy G. Schaefer
- Dan Schroeder
- Roger Schroeder
- Michael Shapiro
- Dan Sisel
- Bob VanHimbergen, CPA
- Barbara Wanzo

Human Resources Committee

- Amy Rislov, Chair
(Oct. 2017-present)
- Lorelle Mahoney, Chair
(Jan.-Sept. 2017)
- Michael Aldana
- Rebecca Cook
- Ellen Luby

Program Committee

- Angela Bier, M.D., Chair
(Oct. 2017-present)
- Susan Doyle, Chair
(Jan.-Sept. 2017)
- Mary Kellner
- Molly Mulroy
- Maggie Raymond
- Liz Scalf
- Roger Schroeder



Thank You for Your Service!

In September 2017, six board directors retired from their roles after having reached their board term limits. Collectively, they served nearly 70 years! We are grateful for their commitment and leadership. Their dedication to early childhood education has given thousands of children a brighter future.

Our six retiring directors are (pictured left to right): **Susan Doyle**, North Shore Bank, **Lorelle Mahoney**, Aurora Health Care - Retired, Board Chair **Thomas Arenberg**, Accenture - Retired, **Hans Kirkegaard**, Imagine Branding, and **Tchernavia Rocker**, Harley-Davidson Motor Company. Not pictured: **Michael Aldana**, Quarles & Brady, LLP.

We also wish to thank three additional board directors who ended their board service in 2017: **Julie Krey**, ManpowerGroup, **Kathleen B. Schrader**, Greater Milwaukee Foundation - Retired, and **Zach TeWinkel**, US Bank.

We wish to thank all who made gifts in honor of our retiring board directors.

In Honor of Next Door's Six Retiring Board Directors

- Mr. and Mrs. Charles R. Barney
- Mr. and Mrs. Thomas R. Butler
- Mary and James Conlon
- Mr. and Mrs. Robert W. Fouch
- Dr. Susan E. Gruber
- Mary and Ted Kellner
- Marja and Jeff Koenitzer

- Suzanne and Richard Pieper
- Romoser Charitable Fund
- Mr. and Mrs. Michael H. Shapiro

In Honor of Thomas Arenberg

- Mr. and Mrs. Thomas Doyle
- Mr. and Mrs. Donald C. Kieffer
- Laurie and Mike Mahoney

In Honor of Laurie Mahoney

- Marian and Bill Nasgovitz
- Mr. and Mrs. Robert J. Schuemann

In Honor of Tchernavia Rocker

- The Harley-Davidson Foundation

On the Table

Next Door joined more than 5,400 people across 74 zip codes for this region-wide forum with the Greater Milwaukee Foundation in October 2017. The program featured mealtime conversations about the issues our community faces and the individual/collective measures we can take to create change. Next Door held breakfast and lunch sessions that day, welcoming nearly 100 guests. Additionally, we hosted several breakfasts in November and December to engage more community members in conversations. We asked all of our guests to commit to taking one action to improve the community over the next month.



Our Vision:

Next Door's vision is to position neighborhood children and families for long-term success.



nextdoor

— Stronger Families Through Education —



2545 N. 29th St. • Milwaukee, WI 53210 • 414.562.2929 • www.NextDoorMKE.org