

2020-2021 Early Head Start / Head Start Program Year



Supporting Families

Meet Yolanda and Daven

After a year of virtual learning, Yolanda Hamilton said her son Daven couldn't wait to return to on-site learning at Next Door.

"He was very excited. When he got there, he wanted to learn."

She was elated, too, especially after watching Daven's progress decline in the virtual environment.

"It was a struggle and it was frustrating because he needs the classroom setting – he needs his one-on-one."

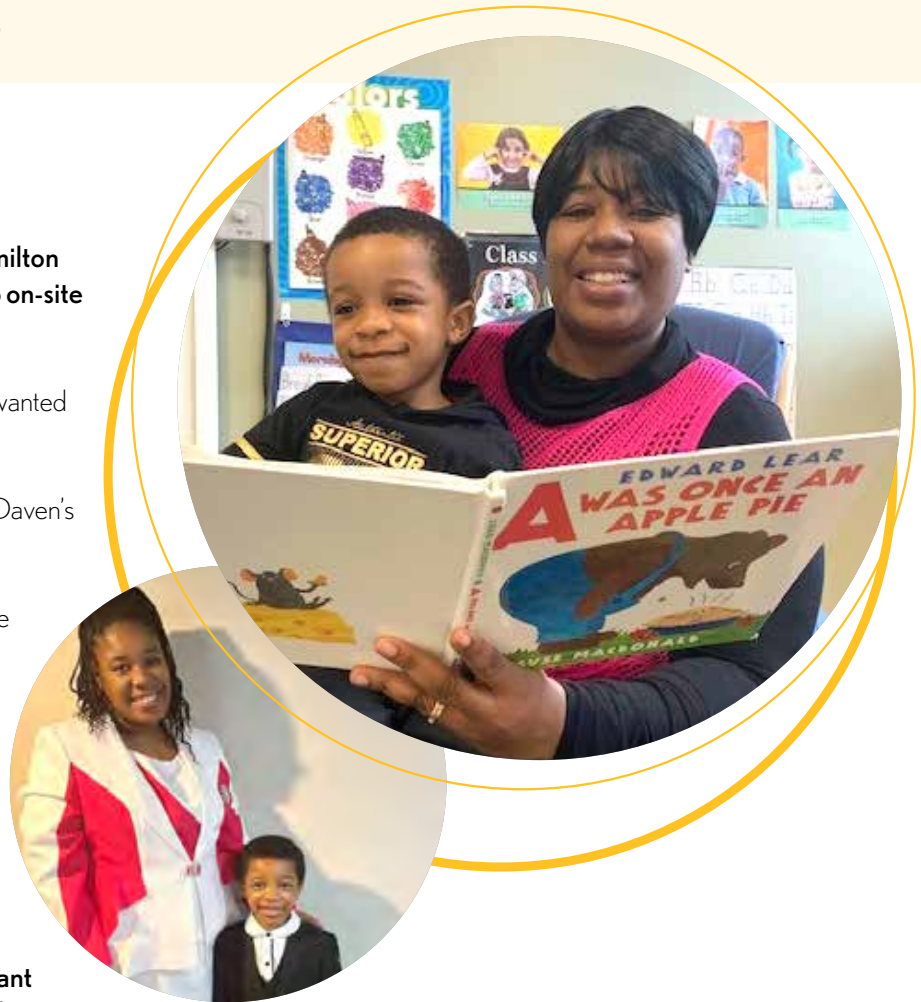
Daven returned to Next Door in July 2021 for a summer school program for K4 students. Next Door offered the program to support K4 students in their transition to K5.

Being back in-person was especially important for Daven, who has developmental delays. His mom started seeing improvements over the summer, particularly with fine motor skills.

"He had some great teachers who worked with him," she said. "He was picking up crayons, able to draw lines and circles on paper and picking up playdough. His hands were getting stronger."

Another summer highlight was an in-person family event. Yolanda volunteered for the event while Daven and his grandma enjoyed the carnival activities together. Yolanda said one additional bonus was free clothing and backpacks for families to get ready for the new school year.

Daven entered K5 in the fall at our Capitol Drive campus and reunited with specialists in physical, occupational and speech therapy. His mom receives weekly reports on his progress.



"Getting the reports to me is knowing what he's learning and what they're teaching him – that's why it's important to me," she said. "If I know what he's working on, I can ask him a question about it or try to do it with him (at home)."

Yolanda says Daven is learning how to read, writing his name, counting higher, and volunteering to demonstrate tasks in class. And he shows tremendous pride in his work.

"Normally he wouldn't care about what's in his book bag," Yolanda said. "Now, he wants to show me everything that's in there. He wants to show me what he learned and what he did."

Student and Program Outcomes

2020-2021 Program Year
July 1, 2020-June 30, 2021

Educational services provided for children:

- Center-based classroom and home-visitation programming
- Research-based curriculum focused on literacy, language, cognitive, math, fine and gross motor, and social-emotional development
- Medical and dental screenings and health curriculum
- Mental health and developmental assessment and interventions
- On-site counseling and therapy services
- Innovative and research-based pilot programs
- Reading specialists and volunteer tutors
- Three free books each month
- Modern facilities and classrooms, libraries, art studios, indoor and outdoor play spaces

Support services provided for families:

- Education on nutrition, preventative medical and oral health care, postpartum care, healthy relationships
- Classroom and Site Parent meetings
- Conferences discussing their child's assessments and progress
- Opportunities to volunteer in the classroom and at events
- Supporting transitions between their child's educational programs
- Parenting support around challenging behaviors and at-home learning
- Family engagement events throughout the year
- English as a Second Language training
- Education on financial wellness, education advancement, job training and application assistance
- Resources for substance abuse, mental health services, emergency / crisis intervention, housing assistance

Support services provided for pregnant women:

- Prenatal and postnatal health care
- Oral health assessment, exam and/or treatment
- Mental health interventions and follow up
- Education on fetal development, breastfeeding, importance of nutrition, infant care, safe sleep practices
- Education on risks of alcohol, drugs and smoking
- Facilitating access to substance abuse treatment

1,063

Children
Served

988

Families
Served

86%

of children served
living at or below
poverty line or
otherwise
eligible

218

Dual Language
Learners

1,029

Children with a
Medical Home

438

Children with a
Dental Home

25

Pregnant Women
Served

Accelerating Equity in Education at Next Door

Accelerating Equity is a critical initiative providing all of the academic and social-emotional and developmental resources we have in the past – and expanding them to meet today's needs.

Why This Is Important

- **It's Necessary:** The pandemic greatly impacted the academic and social-emotional development of children in Milwaukee during a peak period of brain development.
- **It's Equitable:** All children and families – no matter socio-economic status – deserve the chance to be back for in-person learning, engagement and support.
- **It's Possible:** We have the resources, talent and passion to do this important work.

What Next Door Is Doing

- Maintaining our high quality early childhood education with a series of enhancements to support our students' needs.
- Returning to 100% in-person education for our center-based and home-based programming and maximizing learning every day children are with us.
- Increasing our focus on individualized and innovative support for children to meet their academic, social-emotional and physical needs.
- Strengthening partnerships with parents in their child's education and ensuring they have the resources to build strong families.
- Enhancing high quality professional development for staff and expanding wellness services to build resilience in challenging times.



Accelerating Literacy

Why This Is Important

- Building literacy skills early in life is fundamental to long-term success in school.
- Literacy isn't just about reading. It's writing, speaking and listening, too.
- Limited in-person learning during the pandemic impacted our children's literacy development.



What Next Door Is Doing

- Maintaining our long-standing focus on literacy with language-rich environments.
- Embedding reading across subject areas.
- Two new Reading Specialists providing monthly professional development for teachers and individualized instruction for children every day.
- Engaging community volunteers, called Accelerators, to work one-on-one with students in core academic areas.
- Resuming in-person library visits for children to engage in our volunteer Read with Me program.



Meet Princeton

Princeton is engaging with his Reading Specialist, Annie. She says he has grown tremendously in his literacy development this year.

Princeton meets with Annie alongside a few classmates three times a week. He is demonstrating progress with his sight word recognition and can now use these words in sentences. He also recognizes letter names and their sounds. Annie says Princeton is significantly more focused, less disruptive and works well with the group. He even praises his friends in their exercises!

Accelerating Advancement and Innovation

Why This Is Important

- Innovative experiences can ignite a child's passion for learning and exploration.
- Children can use their imaginations and build important cognitive skills and vocabulary.
- Students are exposed to experiences they typically wouldn't have access to and become more aware of the world around them.



What Next Door Is Doing

- Virtual Reality programming for K5 students to build vocabulary and foundational knowledge.
- LENA (Language Environment Analysis) technology to measure student-teacher conversational interactions to build language development.
- STEAM learning promoting children's exposure to fields of science, technology, engineering, art and math.
- Expanding learning experiences in new thematic play spaces featuring the sea, nature, outer space and a global village.



Meet Taddeo

Taddeo is exploring the Great Barrier Reef! The journey is part of Next Door's virtual reality program.

His teachers say Taddeo shows a lot of enthusiasm in this area and is building his vocabulary and foundational knowledge. He is learning words like "observe," "compare," "above," and "below" and using them in classroom conversations. He and his peers also practice counting and colors through virtual reality, read stories about the places they visit, and write and draw about them.

Accelerating Mental Health

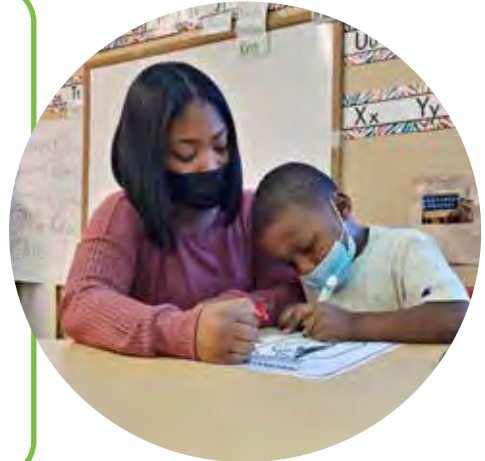
Why This Is Important

- Building strong social-emotional skills is critical for children to positively participate in their classrooms and focus on academic, physical and wellness activities.
- Children build resilience, character and perseverance through social-emotional learning.
- Some of our children may have experienced increased trauma or chronic stress as a result of the pandemic and need an enhanced support system.



What Next Door Is Doing

- One-on-one intervention for children with our Positive Behavior Support Team and Special Instructional Assistants to address emotional regulation.
- A new social-emotional curriculum offering small-group workshops for K5 students to learn, discuss and journal about feelings.
- Expanding on-site counseling services with Children's Wisconsin for Next Door children of all ages.
- Agency-wide training on a Trauma Sensitive School model.



Meet Rochelle

Rochelle is one of our Special Instructional Assistants. We expanded this role in the 2021-2022 school year to handle an increased amount of students with special needs.

Rochelle visits classrooms daily for one-on-one student support. Her strategies include: visual schedules to prepare children for the day, offering them choices, and practicing school experiences together to help them lower anxiety.

Rochelle partners closely with parents and teachers to understand root causes of behavior and share strategies.

Accelerating Physical Health and Safety

Why This Is Important

- Children's healthy physical development provides a critical foundation for the development of their academic and social-emotional skills.
- Increasing opportunities for physical activities builds important gross motor skills.
- New protocols with the pandemic necessitate increased classroom safety measures and education for children, alongside our ongoing health and safety lessons for daily life.



What Next Door Is Doing

- Ensuring all children have access to important health screenings, physical/dental exams, and immunizations within the first 90 days of the school year.
- Expanding a health curriculum to K3 covering topics like handwashing and pedestrian and water safety.
- Weekly yoga sessions for K5 children and renovated indoor and outdoor play spaces for all children.
- Addressing classroom quarantines for Covid-19 with contact tracing, personal calls to families and at-home test kits.



Meet Nazon

When it's time for yoga class, Nazon is always ready to go! He and his classmates participate in weekly yoga sessions. Nazon's teachers say he fully engages every time and especially likes the tree and tables poses.

His teachers notice Nazon influencing his friends to be calm during yoga, too. They say he is more focused in the classroom when they return, and remembers the poses when they do them in class as part of calming techniques.

Supporting Staff

For our students to thrive, we must invest in our teachers and staff.

For Domonique Handley, taking time out of the day for a body scan is one of her “go-to” mental health tools to support her critical work as an early childhood educator for Next Door.

“I like to lay on the floor and then just kind of feel everything in my body and focus on breathing, trying to relax and just being aware of how my body is feeling.”

Domonique learned this technique as part of EMBRACE – Effective Mindfulness Building Responsive and Confident Educators. The program developed by a partner in the Educare Learning Network, supports the mental health of early childhood teachers to lower stress and build resilience and passion for their work.



Domonique is one of 17 Next Door teachers who have participated in EMBRACE. They spend six months working with an EMBRACE coach on a variety of strategies including mindfulness, journaling, and a deep exploration of feelings.

“I felt like my process of understanding my feelings grew tremendously,” Domonique said. “I’m aware of how I’m feeling and it helps me mentally prepare my reactions to things now, so I found that very helpful.”

Our Extensive Coaching Team



Professional Goals

- 15 Instructional Coaches for teachers at Next Door and our 11 partnership sites.
- Two Family Services Coaches for our Family Advocates.
- Aspiring Leaders program for staff agency-wide.



Personal Goals

- Two Success Coaches for all employees at Next Door and our 11 partnership sites.
- Help employees develop goals and action plans in areas like housing, taxes and education.



Wellness Goals

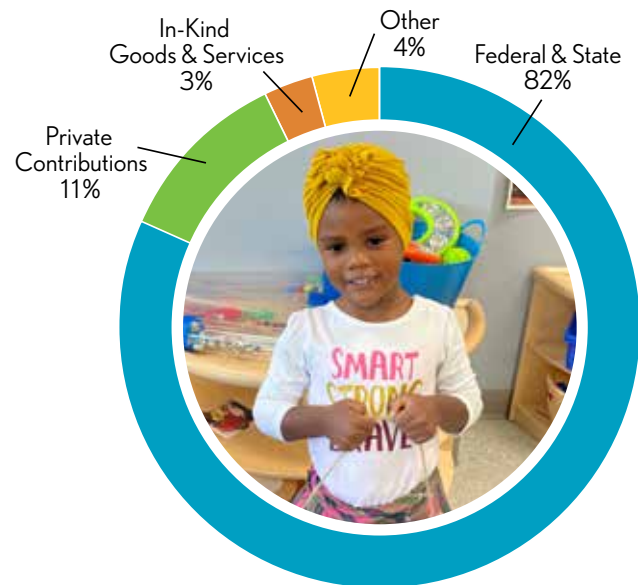
- A Wellness Specialist supporting all employees.
- Offers mindfulness, yoga, self-care plans, health screenings and more.

Financial Outcomes

2020-2021 Operating Revenue

Year Ended June 30, 2021

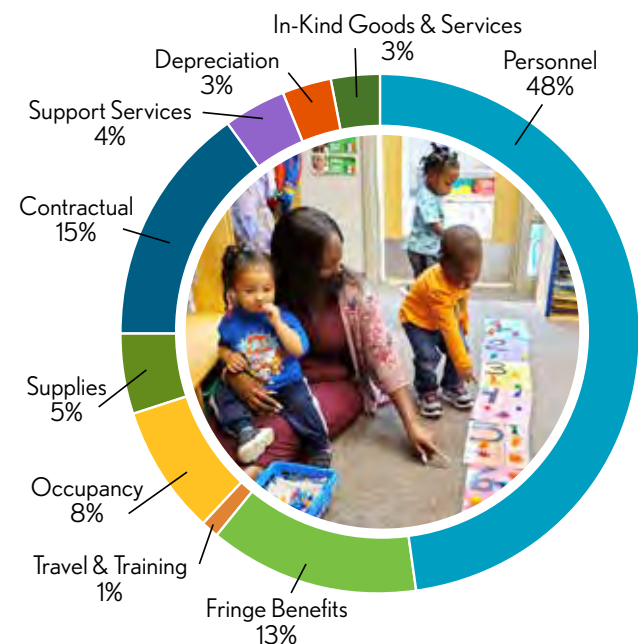
Operating Revenues	Amount	Percentage
Federal & State	\$20,383,286	82%
Private Contributions	\$2,795,095	11%
In-Kind Goods & Services	\$849,210	3%
Other	\$986,762	4%
TOTAL	\$25,014,353	100%



2020-2021 Operating Expenses

Year Ended June 30, 2021

Operating Expenses	Amount	Percentage
Personnel	\$11,788,680	48%
Fringe Benefits	\$3,076,551	13%
Travel & Training	\$233,270	1%
Occupancy	\$1,864,296	8%
Supplies	\$1,288,677	5%
Contractual	\$3,563,184	15%
Support Services	\$959,350	4%
Depreciation	\$637,218	3%
In-Kind Goods/Services	\$849,210	3%
Other	\$51,339	<1%
Total Expenditures	\$24,311,775	100%



Federal Review

The outcome of the Federal Monitoring Review for 2020-2021 indicated that Next Door was in full compliance with the Head Start/Early Head Start program and performance standards, regulations and policy requirements.

Independent Federal Audit

Next Door continues to demonstrate strong financial and operational controls. The agency-wide audit for fiscal year ending June 30, 2021, continued a determination of low risk audit status.

2021-2022 Next Door Budget

July 1, 2021 to June 30, 2022

Operating Revenues	Amount	Percentage
Federal and State	21,877,300	82%
Private Contributions	2,447,000	9%
In-Kind	2,152,100	8%
Other	125,000	0%
Total Revenue	\$26,601,400	100.0%

Operating Expenses	Amount	Percentage
Personnel	\$12,104,800	45%
Fringe Benefits	\$3,528,300	13%
Training/Technical Assistance	\$295,300	1%
Contractual	\$4,690,900	17%
Occupancy	\$1,673,300	6%
Equipment and Supplies	\$853,100	3%
Operational Activities	\$729,465	3%
Restricted Development/Endowment	\$122,000	0%
Depreciation/Amortization	\$622,540	2%
Interest	\$257,310	1%
In-Kind	\$2,152,100	8%
Total Expenditures	\$27,029,115	100%

Next Door Foundation receives voluntary philanthropic contributions from the community. These contributions are solicited through grant proposals, individual major gift proposals, mailed and emailed appeals, social media appeals, and from sponsorship, registration and donations to our annual Walk for Children and other events. Contributions are used for operational and programming support, including our early childhood education programs, professional development, family services, mental health, and Books for Kids.

Next Door Executive Team

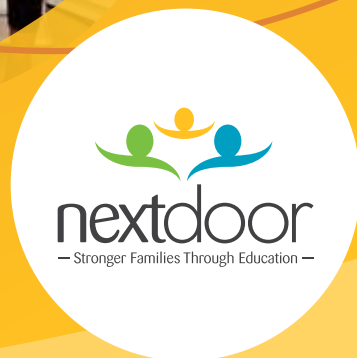
Tracey Sparrow
President
Cristina Crogan
Vice President of
Development and Communication
Bonny Wesson
Vice President of Finance
Myranda Syrjanen
Vice President of Programs

2021 Next Door Board of Directors

Bradley Jansen, CPA, CFE, Chair
PricewaterhouseCoopers
Bob VanHimbergen, CPA
Ex Officio Chair
Johnson Controls
Molly Mulroy, Vice Chair
WEC Energy Group
Dan Sisel, Treasurer
Berengaria Development -
A Marcus Family Company
Tanika Murphy, Secretary
Harley-Davidson Motor Company
Tracey Sparrow, Ed.D.
President, Next Door
Paul Bee
Milwaukee Bucks
Jeb Bentley
Northwestern Mutual
Meg Brzyski Nelson
Children's Wisconsin
Stephen Chitwood
PNC Bank
Rebecca Cook
ManpowerGroup
Simone Conceição, Ph.D.
University of Wisconsin Milwaukee
Benjamin S. Cordani
Caterpillar Global Mining
Vicky Cordani
Community Advocate
Mark Filmanowicz
The Walbec Group
Sadique Isahaku, Ph.D.
Milwaukee Area Technical College
Jason Klein
BMO Wealth Management
Kyongboon Kwon, Ph.D.
University of Wisconsin Milwaukee
Dessie Levy, Ph.D., RN, APNP
Medical College of Wisconsin
Edgar Mayorga, MBA
Johnson Controls, Inc.
Shapayl Parker
Head Start Parent Representative
Amy Rislov
Sentry Insurance
Wendy Schueller
Robert W. Baird & Co., Inc.
Sean Scullen
Quarles & Brady
Celia Shaughnessy
CJS & Associates Consulting
Troney Small
Next Step Clinic
Quamale Stanton
Head Start Parent Representative
Barbara Wanzo
Black Arts MKE

Our Mission

Next Door supports the intellectual, physical and emotional development of children by partnering with their families for success in school and the community.



2545 N. 29th St. • Milwaukee, WI 53210 • 414.562.2929 • www.NextDoorMKE.org

