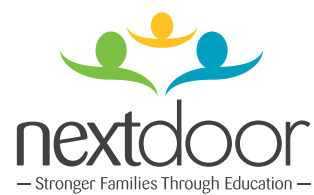


2021 Report to the Community



Doing the Most Important Work in Milwaukee

And It Has Never Been More Important!



Dear Friends,

Our work today is even more critical as we address the significant impact of the pandemic on student learning and growth – all during the greatest period of brain development in a child’s life from birth to age five.

To support our students most effectively, we returned to 100% in-person learning in the fall of 2021 across our center-based and home-based programs. We implemented our Accelerating initiative – providing all of the academic, social-emotional and developmental resources we have in the past and expanding them to meet today’s needs. More details on this comprehensive initiative are inside.

We know that these early years are short and we must do all we can to ensure our students are ready for success in school and in life. It is necessary. It is equitable. And it is possible.

Thank you for your support of Next Door.

Bradley Jansen, CPA, CFE
Board Chair

Tracey Sparrow, Ed.D.
President

2021 Next Door Board of Directors

Bradley Jansen, CPA, CFE,
Chair

PricewaterhouseCoopers
Bob VanHimbergen, CPA
Ex Officio Chair
Johnson Controls

Molly Mulroy, Vice Chair
WEC Energy Group

Dan Sisel, Treasurer
Berengaria Development-A
Marcus Family Company

Tanika Murphy,
Secretary
Harley-Davidson Motor Company

Tracey Sparrow, Ed.D.
President, Next Door

Paul Bee
Milwaukee Bucks

Jeb Bentley
Northwestern Mutual

Meg Brzyski Nelson
Children’s Wisconsin

Stephen Chitwood
PNC Bank

Rebecca Cook
ManpowerGroup

Simone Conceição, Ph.D.
University of Wisconsin
Milwaukee

Benjamin S. Cordani
Caterpillar Global Mining

Vicky Cordani
Community Advocate

Mark Filmanowicz
The Walbec Group

Sadique Isahaku, Ph.D.
Milwaukee Area Technical College

Jason Klein
BMO Wealth Management

Kyongboon Kwon, Ph.D.
University of Wisconsin Milwaukee

Dessie Levy,
Ph.D., RN, APNP
Medical College of Wisconsin

Edgar Mayorga, MBA
Johnson Controls, Inc.

Shapayl Parker
Head Start Parent Representative

Amy Rislov
Sentry Insurance

Wendy Schueller
Robert W. Baird & Co., Inc.

Sean Scullen
Quarles & Brady

Celia Shaughnessy
CJS & Associates Consulting

Troney Small
Next Step Clinic

Quamale Stanton
Head Start Parent Representative

Barbara Wanzo
Black Arts MKE

2021 Accomplishments

Launched innovation



Resumed 100% in-person learning



Celebrated 30 years of Books for Kids



Hosted 10 Covid-19 vaccine clinics and 370 vaccines administered



Upgraded learning environments



Honored as a Top Workplace



Supporting Families

Meet Yolanda and Daven

After a year of virtual learning, Yolanda Hamilton said her son Daven couldn't wait to return to on-site learning at Next Door.

"He was very excited. When he got there, he wanted to learn."

She was elated, too, especially after watching Daven's progress decline in the virtual environment.

"It was a struggle and it was frustrating because he needs the classroom setting – he needs his one-on-one."

Daven returned to Next Door in July 2021 for a summer school program for K4 students. Next Door offered the program to support K4 students in their transition to K5.

Being back in-person was especially important for Daven, who has developmental delays. His mom started seeing improvements over the summer, particularly with fine motor skills.

"He had some great teachers who worked with him," she said. "He was picking up crayons, able to draw lines and circles on paper and picking up playdough. His hands were getting stronger."

Another summer highlight was an in-person family event. Yolanda volunteered for the event while Daven and his grandma enjoyed the carnival activities together. Yolanda said one additional bonus was free clothing and backpacks for families to get ready for the new school year.

Daven entered K5 in the fall at our Capitol Drive campus and reunited with specialists in physical, occupational and speech therapy. His mom receives weekly reports on his progress.



"Getting the reports to me is knowing what he's learning and what they're teaching him – that's why it's important to me," she said. "If I know what he's working on, I can ask him a question about it or try to do it with him (at home)."

Yolanda says Daven is learning how to read, writing his name, counting higher, and volunteering to demonstrate tasks in class. And he shows tremendous pride in his work.

"Normally he wouldn't care about what's in his book bag," Yolanda said. "Now, he wants to show me everything that's in there. He wants to show me what he learned and what he did."

Accelerating Education at Next Door

Why This Is Important

- The pandemic greatly impacted the academic and social-emotional development of children in Milwaukee during a peak period of brain development.
- All children and families – no matter socio-economic status – deserve the chance to be back for in-person learning, engagement and support.
- We have the resources, talent and passion to do this important work.

What Next Door Is Doing

- Maintaining our high quality early childhood education with a series of enhancements to support our students' needs.
- Returning to 100% in-person education for our center-based and home-based programming and maximizing learning every day children are with us.
- Increasing our focus on individualized and innovative support for children to meet their academic, social-emotional and physical needs.
- Strengthening partnerships with parents in their child's education and ensuring they have the resources to build strong families.
- Enhancing high quality professional development for staff and expanding wellness services to build resilience in challenging times.



Accelerating Literacy

Why This Is Important

- Building literacy skills early in life is fundamental to long-term success in school.
- Literacy isn't just about reading. It's writing, speaking and listening, too.
- Limited in-person learning during the pandemic impacted our children's literacy development.



What Next Door Is Doing

- Maintaining our long-standing focus on literacy with language-rich environments.
- Embedding reading across subject areas.
- Two new Reading Specialists providing monthly professional development for teachers and individualized instruction for children every day.
- Engaging community volunteers, called Accelerators, to work one-on-one with students in core academic areas.
- Resuming in-person library visits for children to engage in our volunteer Read with Me program.



Meet Princeton

Princeton is engaging with his Reading Specialist, Annie. She says he has grown tremendously in his literacy development this year.

Princeton meets with Annie alongside a few classmates three times a week. He is demonstrating progress with his sight word recognition and can now use these words in sentences. He also recognizes letter names and their sounds. Annie says Princeton is significantly more focused, less disruptive and works well with the group. He even praises his friends in their exercises!

Accelerating Advancement and Innovation

Why This Is Important

- Innovative experiences can ignite a child's passion for learning and exploration.
- Children can use their imaginations and build important cognitive skills and vocabulary.
- Students are exposed to experiences they typically wouldn't have access to and become more aware of the world around them.



What Next Door Is Doing

- Virtual Reality programming for K5 students to build vocabulary and foundational knowledge.
- LENA (Language Environment Analysis) technology to measure student-teacher conversational interactions to build language development.
- STEAM learning promoting children's exposure to fields of science, technology, engineering, art and math.
- Expanding learning experiences in new thematic play spaces featuring the sea, nature, outer space and a global village.



Meet Taddeo

Taddeo is exploring the Great Barrier Reef! The journey is part of Next Door's virtual reality program.

His teachers say Taddeo shows a lot of enthusiasm in this area and is building his vocabulary and foundational knowledge. He is learning words like "observe," "compare," "above," and "below" and using them in classroom conversations. He and his peers also practice counting and colors through virtual reality, read stories about the places they visit, and write and draw about them.

Accelerating Mental Health

Why This Is Important

- Building strong social-emotional skills is critical for children to positively participate in their classrooms and focus on academic, physical and wellness activities.
- Children build resilience, character and perseverance through social-emotional learning.
- Some of our children may have experienced increased trauma or chronic stress as a result of the pandemic and need an enhanced support system.



What Next Door Is Doing

- One-on-one intervention for children with our Positive Behavior Support Team and Special Instructional Assistants to address emotional regulation.
- A new social-emotional curriculum offering small-group workshops for K5 students to learn, discuss and journal about feelings.
- Expanding on-site counseling services with Children's Wisconsin for Next Door children of all ages.
- Agency-wide training on a Trauma Sensitive School model.



Meet Rochelle

Rochelle is one of our Special Instructional Assistants. We expanded this role in the 2021-2022 school year to handle an increased amount of students with special needs.

Rochelle visits classrooms daily for one-on-one student support. Her strategies include: visual schedules to prepare children for the day, offering them choices, and practicing school experiences together to help them lower anxiety.

Rochelle partners closely with parents and teachers to understand root causes of behavior and share strategies.

Accelerating Physical Health and Safety

Why This Is Important

- Children's healthy physical development provides a critical foundation for the development of their academic and social-emotional skills.
- Increasing opportunities for physical activities builds important gross motor skills.
- New protocols with the pandemic necessitate increased classroom safety measures and education for children, alongside our ongoing health and safety lessons for daily life.



What Next Door Is Doing

- Ensuring all children have access to important health screenings, physical/dental exams, and immunizations within the first 90 days of the school year.
- Expanding a health curriculum to K3 covering topics like handwashing and pedestrian and water safety.
- Weekly yoga sessions for K5 children and renovated indoor and outdoor play spaces for all children.
- Addressing classroom quarantines for Covid-19 with contact tracing, personal calls to families and at-home test kits.



Meet Nazon

When it's time for yoga class, Nazon is always ready to go! He and his classmates participate in weekly yoga sessions. Nazon's teachers say he fully engages every time and especially likes the tree and tables poses.

His teachers notice Nazon influencing his friends to be calm during yoga, too. They say he is more focused in the classroom when they return, and remembers the poses when they do them in class as part of calming techniques.

Accelerating Our Learning Environments

We strive to make learning happen all over Next Door! In 2021, we introduced multiple new spaces beyond the classroom that are providing children valuable opportunities to grow their minds and bodies during a critical time of their development.

29th Street

- Transformed two indoor play spaces to be more developmentally appropriate and offer new learning experiences.
- Renovated our Books for Kids library with a rainforest theme and enhanced comforts for Read with Me.
- Remodeled outdoor playgrounds with more robust options for physical activity and nature exploration.
- Opened a new Parent Engagement Center.



Capitol Drive

- Transformed two indoor play spaces with vibrant murals depicting woodlands and a global village.
- Enhanced a space for small-group learning with a beehive-themed mural.
- Introduced new learning experiences for children based on the themes in each space.



Celebrating Books for Kids



Books for Kids 30th Birthday Celebration!

We celebrated 30 years of Books for Kids with our largest book drive ever! Thanks to everyone who led book drives and donated books and funds.



2021 Highlights

- Children received three free books each month to build home libraries.
- Children returned to our libraries twice a month for Read with Me.
- The Community Library reopened, distributing just over 4,000 free books to the public.
- Our Mobile Library hit the streets again with quarterly visits at our 11 partnership sites.



Accelerating Access

Child Care Partnership (CCP)

Why This Is Important

- CCP increases access to high quality early childhood education for Milwaukee families.
- Access is needed now more than ever with 200+ early childhood organizations in Milwaukee closing due to the pandemic.
- CCP gives more Milwaukee children a strong start to life and prepares them for success in school.



What Next Door Is Doing

- Leading a federal grant program (since 2015) with nine early childhood education partners at 11 sites across Milwaukee.
- Providing Next Door Instructional Coaches and professional development for partner site teachers.
- Offering Next Door Family Advocates to support partner site families with important community resources for children’s health and family stability.
- CCP reaches 330 children across 60 classrooms and indirectly impacts 1,400 additional children at the partner sites.



Supporting Families

Meet The Tyson Family

With four young children at home – and two with special needs – life can get stressful for the Tyson family. But their mother, Tatiana, says Next Door’s consistent presence in their lives helps tremendously.

“I think Next Door is just a great support to have. People who don’t know this should.”

Today, the Tyson family splits their time at Next Door between our Home-based program for their five-month-old son, Eli, and our Center-based program for their four-year-old daughter, Ellarie. They have two older sons who also attended Next Door.

Tatiana says the support in the Home-based program has been particularly helpful for her family. They work with our Parent Educator, Natasha, who visits once a week. “She’s amazing. She’s like family at this point.”

Along with the developmental support for Eli, the Tysons have appreciated a host of community resources from Natasha. The resources include food boxes, diapers and wipes, cleaning supplies, holiday gifts for their children and Thanksgiving turkeys. Natasha also provides enormous compassion that means the world to Tatiana.

“She always takes a little bit of extra time to just talk to me and see how I’m doing and that’s always to me very helpful - that’s almost more helpful than any resource that she could give me.”



Families are the cornerstone of Next Door. Here are some of the ways we invest in their success.

- Education on healthcare and healthy relationships.
- Financial education and professional development support.
- Resources for mental health, housing and food insecurity.
- Parenting support for at-home learning and challenging behaviors.
- Year-round family engagement events.
- Parent conferences.
- Opportunities to volunteer in classrooms.

Supporting Staff

For our students to thrive, we must invest in our teachers and staff.

For Domonique Handley, taking time out of the day for a body scan is one of her “go-to” mental health tools to support her critical work as an early childhood educator for Next Door.

“I like to lay on the floor and then just kind of feel everything in my body and focus on breathing, trying to relax and just being aware of how my body is feeling.”

Domonique learned this technique as part of EMBRACE – Effective Mindfulness Building Responsive and Confident Educators. The program developed by a partner in the Educare Learning Network, supports the mental health of early childhood teachers to lower stress and build resilience and passion for their work.



Domonique is one of 17 Next Door teachers who have participated in EMBRACE. They spend six months working with an EMBRACE coach on a variety of strategies including mindfulness, journaling, and a deep exploration of feelings.

“I felt like my process of understanding my feelings grew tremendously,” Domonique said. “I’m aware of how I’m feeling and it helps me mentally prepare my reactions to things now, so I found that very helpful.”

Our Extensive Coaching Team



Professional Goals

- 15 Instructional Coaches for teachers at Next Door and our 11 partnership sites.
- Two Family Services Coaches for our Family Advocates.
- Aspiring Leaders program for staff agency-wide.

Personal Goals

- Two Success Coaches for all employees at Next Door and our 11 partnership sites.
- Help employees develop goals and action plans in areas like housing, taxes and education.

Wellness Goals

- A Wellness Specialist supporting all employees.
- Offers mindfulness, yoga, self-care plans, health screenings and more.

Building the Early Childhood Workforce

Next Door’s Pathways Program

The growing teacher shortage is one of Next Door’s biggest challenges today. In response, we created the Pathways Program in 2021 to help build our local workforce with a talented pipeline of early learning professionals. Pathways offers five different channels to enter the field and pursue advanced degrees — all paid for by Next Door.

We developed Pathways with a holistic approach to learning and career development to support students of all backgrounds. A Success Coach assists them with personal and professional goals and addresses barriers to success. A Pathways Coordinator helps students navigate all aspects of the program.



“The program has potentially groomed me into not only being the best version of myself but also given me the ability to serve children and families in the community. I can only thank GOD, Next Door and MATC for giving me the opportunity to lead our youth in a positive direction.”

– David Tate, Pathways Participant

The Pathways

- **Pre-Apprenticeship** offering newcomers to the field immediate hiring and on-the-job training as an Assistant Teacher at Next Door.
- **High School Dual-Enrollment** for seniors to earn an Infant/Toddler Certificate and begin work as an Associate Teacher after graduation at Next Door or one of our 11 partnership sites.
- **State Apprenticeship** for Next Door teachers to earn an Early Childhood Education Technical Diploma and become a Lead Teacher.
- **Associate’s Degree (two options)** for Next Door teachers to earn their degree and advance into a Lead Teacher position.

Our Pathways Partners



“I am pleased to work for an organization that invests in their teachers. This program truly helps numerous teachers reach new heights in their careers and elevate their skills and knowledge as educators.”

– Courtney Calhoun, Pathways Participant



Strengthening Community Partnerships

Partnerships are one of the most effective ways we can expand and strengthen our high quality early childhood experiences for Next Door students and families. Below is a list of our latest community and national partners.

- American Family Institute for Corporate and Social Impact
- Bryant and Stratton College
- Cardinal Stritch University
- City of Milwaukee Office of Early Childhood Initiatives
- City of Milwaukee Earn & Learn
- Clayton Early Learning Academy - EMBRACE
- DentaMed
- Educare Learning Network
- Employ Milwaukee
- Ignite Child Development
- LENA
- Literacy Lab
- Marquette University
- Medical College of Wisconsin Clinical & Translational Science Institute
- Medical College of Wisconsin School of Pharmacy

- Milwaukee Area Technical College
- Milwaukee Coalition for Children’s Mental Health (part of Mental Health America of Wisconsin)
- Milwaukee Justice Center Mobile Legal Clinic
- Milwaukee Public Schools
- Milwaukee Succeeds
- New Threads of Hope
- Next Step Clinic
- Novir
- School Community Partnership for Mental Health (part of Children’s Wisconsin)
- Social Development Commission Foster Grandparent Program
- United Way of Greater Milwaukee and Waukesha County
- University of Wisconsin-Milwaukee
- UPAF Connect
- Wellpoint Care Network (formerly SaintA)
- Wisconsin Conservatory of Music
- Wisconsin Department of Workforce Development

Partner Spotlight: Medical College of Wisconsin

- Led eight webinars for our staff with the latest Covid-19 information.
- Provided vaccinations for Next Door employees.
- Supported our Covid-19 vaccine clinics for the community.
- Offered a free health screening program for Next Door staff.
- Volunteered for Read with Me.



Appreciating Our Community

We want to thank the individuals, families, companies, schools and more who supported Next Door in many ways in 2021. As we continued to navigate the pandemic, your contributions brought us great joy and pride in our Milwaukee community.



Virtual Walk for Children

- 438 participants.
- 8,383 miles pledged to walk, run or ride.
- \$66,305 raised.
- Special thanks to Harley-Davidson Motor Company for serving as our Presenting Sponsor.



"If You Give a Child a Book"

- A literacy campaign led by TMJ4 News and Scripps Howard Foundation raised just over \$13,500 from the community to support our Books for Kids program with 2,710 new books.
- Proceeds went toward a book fair with two free books for each child across all Next Door programming.



Holiday Gift Giving

- All Next Door students – just over 1,000 children – received gifts.
- 76 Next Door families received gifts for their entire family.
- Gifts included toys, games, books, winter gear and more.



Special Drives

- Fall School Supplies Drive for our classrooms.
- Summer Adventure Packs promoting enrichment activities for students.
- Winter Coat Drive for our children.
- Personal care/household items for our families.



Scan above or visit:
NextDoorMKE.org/Get-Involved/

Appreciating Our Tribute Donors

Many donors make gifts in honor or in memory of those they care about. These gifts are a meaningful way to both pay tribute to their loved ones and to help Next Door children get a strong start to life. We thank these donors for their special contributions to Next Door. The following gifts were made between January 1 and December 31, 2021.

In Honor of Joan Aker James Giffin	In Memory of Barbara Freed Anonymous	In Memory of Bridget Murray William Blair & Company Stephanie Braming Thomas and Carol Butler	In Honor of Tracey Sparrow Amanda Braun
In Honor of Gianni Antetokounmpo Anonymous	In Memory of Gertrude Fritsche Linda Downey	In Memory of James C. Oswald Steve and Sue Oswald	In Honor of Ruth Besse Stein Robert Stein
In Honor of Our Nine Grandchildren William and Marianne Arpe	In Memory of Judy Gertsma Joan Aker	In Memory of Tara Piechocki Carol Gorecki Janet Parker Richard and Mary Kay Piechocki Betty and Lee Ward	In Honor of Ms. Pat Steinbach Pamela Weise
In Honor of Lynn Barney's "Big" Birthday Ann Barney	In Memory of Royal and Donna Gordon Todd and Kathleen Gordon	In Memory of Emily Ugoretz Louis and Carol Stein	In Honor of Michael Uselmann Joan Uselmann
In Memory of Chris Bauer Michelle Fiedler Clarence Harris Caroline Holan and Leo Spanuello Susan Satula Deanna Wendler Modde	In Honor of Ginny Gribble Holly Roussel-Godfrey	In Honor of John Malcolm Utley Anonymous	In Memory of Michael Uselmann Joan Uselmann
In Memory of Anne Bensfield David and MaryAnn Lillich	In Honor of Missy Hodzinski Karen and Rob Zimmerman	In Honor of John Malcolm Utley Anonymous	In Memory of Michael Uselmann Joan Uselmann
In Memory of Paul & Helen Berberet James and Catherine Wilson	In Honor of Kathy Housiaux Deidre Martin	In Memory of Elizabeth 'Meow' Vogt Nan Bogue	In Memory of Michael Uselmann Joan Uselmann
In Honor of Bob's Leadership Team Mark Rakowski	In Memory of Lena Jenison Anna Jenison	In Memory of Victims of the Tragedy in Waukesha Anonymous	In Memory of Michael Uselmann Joan Uselmann
In Honor of Mike and Donna Brady Kevin Brady	In Recognition of Mary Kellner's Books for Kids Celebrating 30 years Ann and Jon Hammes	In Honor of Stanislaw Alexander Wilinski Marissa Alexander	In Memory of Michael Uselmann Joan Uselmann
In Memory of Georgia Lee Buchta Anonymous William Buchta Paul and Patricia Cadorin Barbara Parker Annie and Geoff Rosean	In Honor of Mary & Ted Kellner Chris McIntosh	In Honor of James and Gracia Willis Anonymous	In Memory of Michael Uselmann Joan Uselmann
	In Memory of Ollie Kirksey Rockwell Automation	In Memory of George & Irene Wilson James and Catherine Wilson	In Memory of Michael Uselmann Joan Uselmann
	In Honor of Joyce Koenitzer Judith and Paul McGhee	In Honor of Philip Witonsky Trudi Witonsky	In Memory of Michael Uselmann Joan Uselmann
	In Memory of John Koenitzer Marja and Jeff Koenitzer Judith and Paul McGhee	In Memory of Linda Zukowski Lisa Badran Paula Dlesk Sherry Kulhanek Cynthia Marcus Blust	In Memory of Michael Uselmann Joan Uselmann
	In Memory of Vernon Stephen Lanier Jill Eder		In Memory of Michael Uselmann Joan Uselmann
	In Honor of Brook Lopez Sam Pawlinski		In Memory of Michael Uselmann Joan Uselmann
	In Honor of the Legacy of Martin Luther King, Jr. Jordan Jensen Caroline Lievens		In Memory of Michael Uselmann Joan Uselmann
	In Memory of Mary Ann Mlenar Betty Blachly Ainsley Gaddis Donna Kramer Debra and Douglas Olson Mary Ann Wasick John Wells		In Memory of Michael Uselmann Joan Uselmann
	In Honor of Mom Alexander Sprenger		In Memory of Michael Uselmann Joan Uselmann
	In Honor of the Morrison-Myrvik Families Andrea Morrison		In Memory of Michael Uselmann Joan Uselmann



Appreciating Our Donors

We want to thank Next Door’s generous donors. They represent individuals, families, community foundations and corporations. Their commitment to Next Door helps ensure our little learners build a strong foundation for success in school. These donors also support critical family services programming for parents and caregivers. Here we recognize all new gifts and pledge installments made between January 1 and December 31, 2021.

\$250,000+

A Friend of Next Door
Buffett Early Childhood Fund

\$100,000 - \$249,999

American Family Institute for
Corporate and Social Impact
Bader Philanthropies
Herzfeld Foundation
Mary and Ted Kellner

\$75,000 - \$99,999

Herb Kohl Philanthropies
United Way of Greater Milwaukee
and Waukesha County

\$50,000 - \$74,999

A Friend of Next Door
Greater Milwaukee Foundation
The Francis J. Trecker Fund
The William D. Vogel Fund
Helwig Carbon Products
Brook Lopez and the National
Basketball Players Association
Foundation
Northwestern Mutual Foundation
Kathleen and Paul Roller
Maureen and Ronald Sadoff

\$25,000 - \$49,999

A Concrete Christian Foundation
Brady Corporation Foundation
Four-Four Foundation
Harley-Davidson Foundation
Joan and Fred Brengel Family
Foundation
Johnson Controls Foundation
Payne & Dolan, Inc.
PwC Charitable Foundation, Inc.
Red Nose Day Fund at Comic
Relief US
Shirley M. & Roger H. Schroeder
Anna and Richard Teerlink
Brenda and Bob VanHimbergen

\$10,000 - \$24,999

A Friend of Next Door
American Family Dreams
Foundation
Diane and Thomas Arenberg
Dr. Isabel Bader
Donna and Donald Baumgartner
Bert L. and Patricia S. Steigleder
Charitable Trust
Melanie and Steven Booth

Bostik
Ginny Bowen
Carol and Thomas Butler
Greater Milwaukee Foundation
Burns-Schrader Family Fund
Catherine and Walter Lindsay
Foundation Fund
John C. and Harriett Cleaver
Fund
Ildy and Skip Poliner Fund
Kathy's Parenting Fund
Linda and Michael Groth
Hepburn "Bootstrap" Foundation
Jane Bradley Pettit Foundation
Margaret and Steven Laughlin
LENA Research Foundation
Brenda and Matthew Levatich
Matrix Foundation
Marian and Bill Nasgovitz
Lynn Nicholas
Suzanne and Richard Pieper
PieperPower
Jeanne and Larry Prochnow
SeaChange Capital Partners
U.S. Bank Foundation
We Energies Foundation
William Stark Jones Foundation

\$5,000 - \$9,999

A.O. Smith Foundation
Joan Aker
Kay and Fred Austermann
Lynn and Charles Barney
Charles D. Jacobus Family
Foundation
Karen Christenson
Sarah and Bob Duncan
Executive Women International
Foley Family Foundation
Frenzel Family Charitable
Foundation
Claire Fritsche
Greater Milwaukee Foundation
Joan and Peter W. Bruce Fund
Hitler Family Fund
Hope H. Anderson Fund
Journal Foundation Thomas
and Yvonne McCollow Fund
Mainman Family Fund
Harley-Davidson Motor Company
Drs. Jane Hawes and David Shapiro
Mark and Jan Homan
Mr. and Mrs. B. Robert Kill
Kathy and Ian Lambert
Camilla and James Levin

Barbara McMath and Robert
Ferriday
Linda and John Mellowes
Molly Mulroy
PNC Foundation
Sylvia and Jonas Prising
Quarles & Brady LLP
Stacey and Steven Radke
Ralph Evinrude Foundation
Rexnord Foundation
Nancy and Mike Roos
Kristin and Ryan Schultz
Molly and Mike Shapiro
Mary Ellen and Scott Stanek
Triotech Corporation of America
William N. and Janice V. Godfrey
Family Foundation Trust
James & Yvonne Ziemer

\$2,500 - \$4,999

John Brandser
Children's WI
Susan and Thomas Doyle
Ernest and Sally Micek Family
Foundation
Evan & Marion Helfaer Foundation
Mark and Holly Filmanowicz
Stephen Fischer
Barbara and Heiner Giese
Greater Milwaukee Foundation
Chris M. Bauer Fund
Green Bay Packers Foundation
Sally Jarrar
Jacqueline and Gregory Johnson
Dawn and Jason Koenitzer
Diane McGinn
Nancy M. and Douglas M. Yeager
Family Foundation
Rhonda and Gregory Oberland
Amy and John Rislov
Mr. and Mrs. Thomas G. Smith
Nancy and Timothy Speaker
A.J. Star
Townsend Foundation
U.S. Bank
Hester and Jack Werner
Lisa and John Wilson

\$1,000 - \$2,499
1840 Brewing Company
Accenture
Albert J. & Flora H. Ellinger
Foundation
Renae and Michael Aldana
Dr. Linda and Barry Allen

Paul and Kristi Antonneau
Marianne and William Arpe
Atkinson/Ells Charitable
Foundation
Baird
John Barrett
Cindy Benning
Elissa and Thomas Bolger
Boswell Book Company
Meg Brzyski Nelson
William Buchta
Lisa Cadotte and Tony Milczarek
Catholic Memorial High School
Charles D. Ortgiesen Foundation
Charter Manufacturing Company
Foundation
Theresa and Ryan Chimenti
Mary and James Conlon
Rebecca Cook
Vicky and Benjamin Cordani
Cristina and Jeff Crogan
Yvonne and Gloster Current
Mary and Daniel Czarnecki
Sigrid Dynek
Amelia and Eric Elfner
Erie Insurance
Donna Faw and Jay Miller
Greater Milwaukee Foundation
Bechthold Family Fund
Donald and Barbara Abert Fund
Joseph and Laura Mantoan Fund
Lawlis Family Fund
Lisa Berman Fund
Nichols Family Fund
Stern Family Fund
Kathleen and Todd Gordon
Greater Milwaukee Association of
Realtors Youth Foundation
Katherine and Michael Grebe
Susan Gruber
Hammes Company
Ann and Jon Hammes
Ruth and Simon Harper
Mary and John Heuer
Haley Hill
Kathryn and John Housiaux
Katie and Bradley Jansen
Sarah and Robert Jansen
Johnson Controls
Jewish Community Fund
Anne & Stephen Kravit Donor
Advised Fund
Neil & Terri Siegel Family
Charitable Fund
Deborah and Joe Kasle
Matthew Kavalauskas

Eileen and Benjamin Kelly
Erica and Donald Kieffer
Ellen and Hans Kirkegaard
Terri and Jason Klein
Marja and Jeff Koenitzer
Joyce Koenitzer
Jay Kraft
Christie and William Krugler
Mary Ann and Charles P. LaBahn
Katherine Luck
ManpowerGroup
Judith and Paul McGhee
Christopher McKenna
Medical College of Wisconsin
Dr. Edwin Montgomery
Amber and Bary Morgan
Anne and John Mueller
North Shore Bank - Brookfield
Square
Tricia and Thomas Ognar
Our Savior's Lutheran Church
Nancy Pawewski
Karen and James Pieper
PNC Bank
Maureen Post
Christine Radiske and Herbert
Quigley
Wendy Randall
Ruth M. Ritter
Donald and Marsha Roecker
Kathleen Rogers and David
Pritchard
Katherine Romanski
Gayle Rosemann and Paul
McElwee
Julie and Mason Ross
Rovin Family
Erich Rusch
Mary and Dan Schroeder

Wendy Schueller
Janet Shapiro
Jayme and Daniel Sisel
Tracey and Geoffrey Sparrow
Florence Steinberger
Jeff Steren
Studio Gear
The Nicholas R. Rizzi Foundation
Lynn Tolcott
Ellen and Robert Venable
Jennifer Verbrigghe and
Chris Engelken
Thora Vervoren
Virginia F. John Survivor's Trust
Wauwatosa Savings and Loan
Foundation
Cathy and Michael White
Ann and George Whyte
William Blair & Company
Elaine and Ken Willis
Linda Yeager and John Florsheim
Zurn Water Solutions

\$500 - \$999

A Friend of Next Door
Manohar Ahuja
Julie Anding and Lisa Kornetsky
Gwen and Daniel Armbrust
Lisa Badran
Pat Baldwin
Bank Five Nine
Lynn Behling
Maija and John Bentley
Drs. Susan and Paul Bernstein
Drs. Angela Bier and Jimmy Kim
Lori and Mark Boutelle
Boy Scouts of America - Three
Harbors Council
Anne and Francis Brzezinski

Sharon and Richard Canter
Vinnny Carpenter
George Ann and Paul Casper
Mary Coughlin
Judith Croak
Cross Management Services, Inc.
Joanne Danforth and Stewart
Edwards
Nora and Don Dreske
Eileen and Howard Dubner
Dr. Steve Dubner
Thomas Dunham
Kevin Duvalle and Fred Lueneburg
Sandra Eaton
Educators Credit Union
Edward Filmanowicz
Claudia and Thomas Francis
Yvette Gideon and Rodger
Sonneborn
Carole and Adam Glass
Kate Gomoll
Steven Gorzek
Greater Horizons - William Blair &
Company Charitable Matching
Gifts Fund
Greater Milwaukee Foundation
Bill & Gwen Werner Fund
Susan D. Mischler Fund
Ginny Gribble
Robert Habich
Leslie Hauser and Karl E. Wuesthoff
Nick Heger
Helwig Carbon Products
Employees
Jessica Hodgson
Kristine Jensen
Lindsey Johnston
Susie Kasten
Anthony Krausen

Sherry Kulhanek
Nancy Laskin
Jordan Lazovik-Dunham and
Thomas Dunham
Alex Lemann
Brian Leone
MaryAnn and David Lillich
Ann and Leroy Lutz
Susan and Brent Martin
James McFarland
Chris McIntosh
Nancy and Alan Meier
Annette Mertens and Chris
Rockwood
Anne and Tom Metcalfe
Mirnosa
Susan and Daniel Minahan
Tanika and Bryan Murphy
O'Neill Foundation
Sue and Steve Oswald
Pilot Club of Milwaukee Fund
Paula and Mark Rhyner
Lynn and Paul Rix
Gael and David Romoser
Jerome Sayles
Elizabeth and David Scalf
Brenda Sponder
Catherine Shaw and Robert Storm
Gina Spang
Kim Tolbert
Sue and Mark Umhoefer
Zettabell and Willie Williams
Nancy Yttre

Advancement, Innovation and Research Fund

Through the special support of a long-time friend of Next Door, we are excited to announce the launch of our new Advancement, Innovation and Research (AIR) Fund.

The AIR Fund will support pilot projects to help us do the most important work in Milwaukee. They will include:

- Innovative new ways of learning
- Understanding of the impact of early interventions on academic and social-emotional development
- Local and national research studies

A \$100,000 AIR Fund Challenge has been issued by the donor to further support future projects at Next Door. For more information about the projects, see page seven in this report or contact Cristina Crogan, VP of Development and Communication at ccrogan@NextDoorMKE.org.

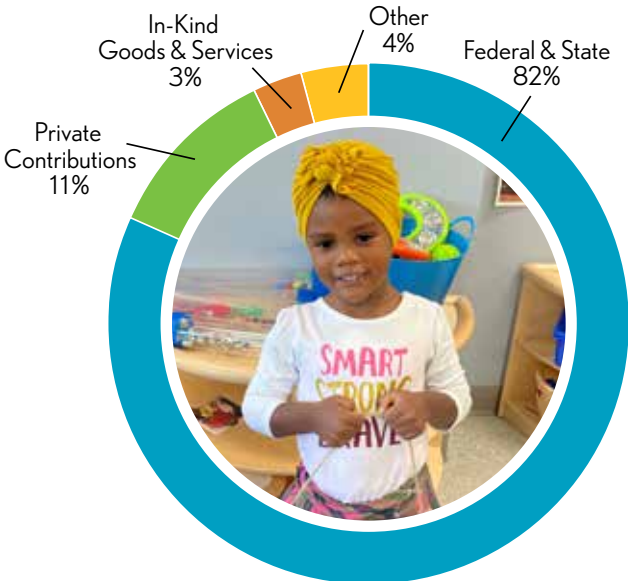


Financial Outcomes

2020-2021 Operating Revenue

Year Ended June 30, 2021

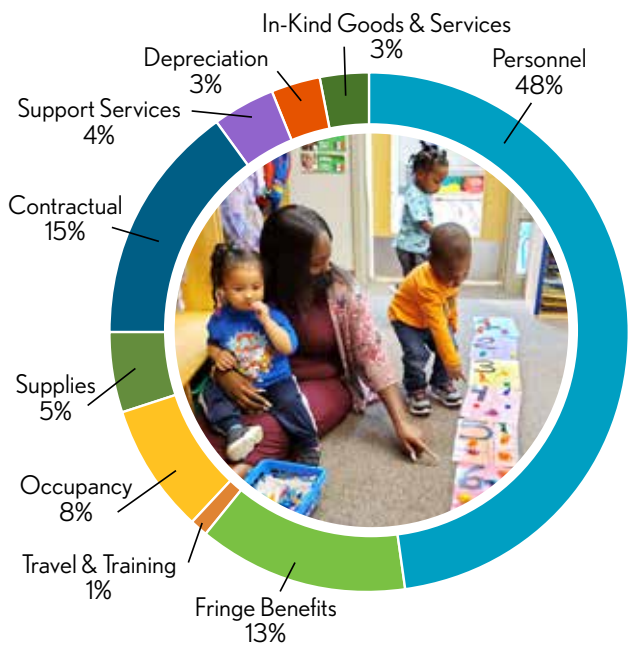
Operating Revenues	Amount	Percentage
Federal & State	\$20,383,286	82%
Private Contributions	\$2,795,095	11%
In-Kind Goods & Services	\$849,210	3%
Other	\$986,762	4%
TOTAL	\$25,014,353	100%



2020-2021 Operating Expenses

Year Ended June 30, 2021

Operating Expenses	Amount	Percentage
Personnel	\$11,788,680	48%
Fringe Benefits	\$3,076,551	13%
Travel & Training	\$233,270	1%
Occupancy	\$1,864,296	8%
Supplies	\$1,288,677	5%
Contractual	\$3,563,184	15%
Support Services	\$959,350	4%
Depreciation	\$637,218	3%
In-Kind Goods/Services	\$849,210	3%
Other	\$51,339	<1%
Total Expenditures	\$24,311,775	100%



Our Families Love Next Door!



"I love Next Door because Next Door takes good care of my child."



"I am thankful for the Next Door Foundation because they have given my son a great opportunity for a good education."



"My children are growing and learning at Next Door by taking turns, sharing, being patient, standing in line, learning to spell, writing their names and letters, counting, engaging with others and learning to apologize."



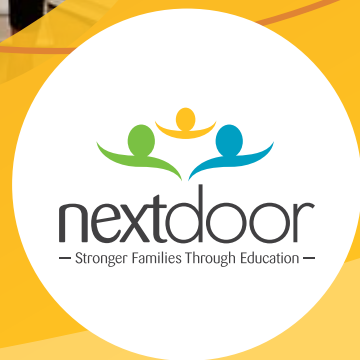
"My experience with Head Start has been beyond wonderful. Thanks to the caring and nurturing people at the Next Door Foundation, my kids will get the head start to their education they deserve."



"He can't wait to get up each morning and get there. I think (coming to Next Door) was the best choice we could have made."

Our Mission

Next Door supports the intellectual, physical and emotional development of children by partnering with their families for success in school and the community.



2545 N. 29th St. • Milwaukee, WI 53210 • 414.562.2929 • www.NextDoorMKE.org

