

2024 Report to the Community



nextdoor

All-In for Children

Dear Next Door Community,

Thank you for being a part of our incredible village of support, guiding more than 1,000 under-resourced children in Milwaukee each year through their first educational chapter at Next Door.

With your support over the past year, we guided children during their peak period of brain development through comprehensive, high-quality early childhood education that builds strong foundations for success in school and in life.

In partnership with parents and families each year, Next Door supports children in meeting academic, social-emotional and physical developmental milestones across our two centers, the State's largest home-based program, and in our many Child Care Partnership sites across Milwaukee. Our reach is wide and our impact great.

Your time spent volunteering, and generous funds donated, are essential keys to our shared success in meeting strong results for our mission. In particular, your contributions help Next Door meet a match requirement that unlocks significant federal funding each year for our high-quality programming; particularly when given for meeting our greatest needs.

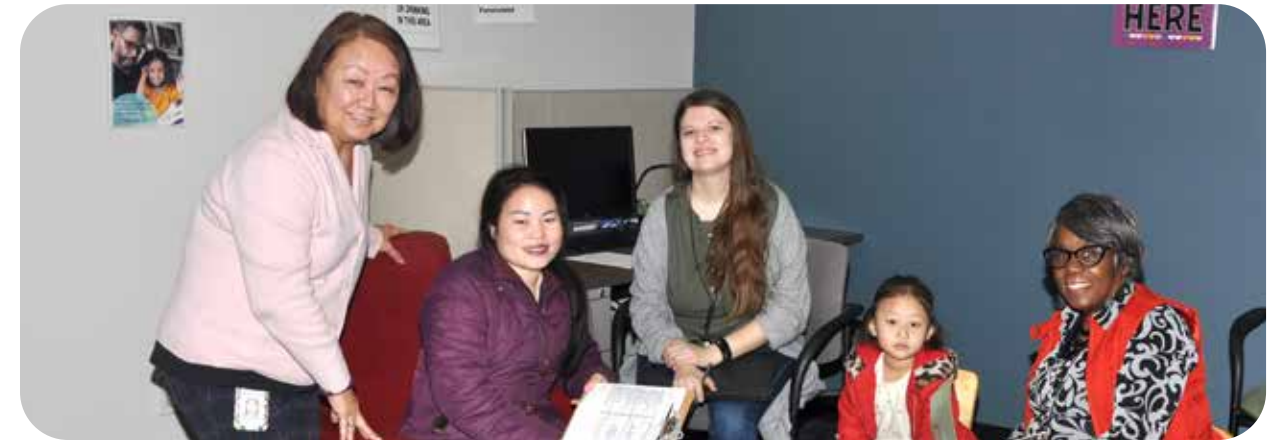
Together, we can continue to deliver an exceptional early learning experience that grows confident, prepared, and joyful children, ready to engage with the world. Thank you for joining us in this powerful mission.



Heather Mehring Grams
Next Door President



Starting the Next Door Journey: Our Enrollment Team



The friendly faces above are a families' first contact with Next Door.

You will often find Chan, Kim and Jessica out in the community introducing parents to Next Door's early childhood education programs and family supportive services.

Our Enrollment and Retention Specialists lead parents on tours of our buildings and guide them through all steps of our enrollment process.

They go a step further by placing children in the best classrooms for them, alerting staff and teachers of specific needs of students, visiting homes to fill out enrollment packets, and working with families to re-enroll at Next Door year after year to build a strong continuity of care.

In the 2023-2024 school year, this team enrolled 1,077 new and returning families to Next Door – positioning their children with a strong start to life that every child deserves.



High-Quality Programs and Services

Our Center-Based Program

Nevaeh's Next Door Growth

Nevaeh started her Next Door journey in 2020, just before turning one. She was a quiet child but determined to grow and become stronger – and she did!

She moved from crawling to walking at Next Door, mastered how to use a spoon to feed herself, and started talking more.

Nevaeh blossomed even more with a significant year of growth in her three-year-old classroom. Her teachers recall Nevaeh growing her knowledge of the alphabet and letter sounds and becoming stronger in counting and in identifying rhyming words, shapes and colors. She loved to read and mastered writing her name by the end of her K3 school year.

She entered K4 with a smooth transition and continued making gains. She is currently one of the top students academically in her class, scoring high marks in assessments like math. Nevaeh has further grown as a curious student who often asks deeper questions. She has developed compassion for others, early in life, as an eager classroom helper to both her teachers and peers.



Nevaeh's Next Door Support System



"As she was with us, she learned to walk by us holding one hand and allowing her to walk along with us. Once she learned how to walk, there was no stopping her – she began to climb on everything! I only had her for a year but it has been amazing watching her grow throughout the years at Next Door."

– Chanel Scott
Nevaeh's first Next Door teacher



"Nevaeh transitioned well into K4. She is someone who I can count on listening on the carpet and is always ready to help and learn. Nevaeh is ready for K5. I think she will do great wherever she is."

– Rebecca Bollinger
Nevaeh's current K4 teacher



"Nevaeh's progress has been amazing to watch! As she grows, I notice her attention to detail is persistent in all of her art making. I have also noticed an increase in her ability to draw and control her lines. She continues to be exceptional at following directions, as well as helping others."

– Tai Hardie
Arts Education Coordinator



"It has been a pleasure to partner with Nevaeh's family and support them along their Next Door journey. It warms my heart that the family has entrusted us with educating three of their children, including Nevaeh. We wrapped ourselves around this family to ensure they had resources for personal needs and educational tools to engage in learning together."

– Donna Morris
Director of Family Engagement and Enrollment



High-Quality Programs and Services

Our Home-Based Program

Vannun's Next Door Growth!

Vannun started her Next Door journey at two years old. She and her family enrolled in our home-based program with weekly visits from Next Door Parent Educators who work with both the child and the parents on educational learning and developmental support.

She started out strong, even surprising her Parent Educator with her level of development. She consistently engaged in the activities they did together and stood out for taking her time and following every step in the process.

Vannun's love of reading blossomed at Next Door. To this day, she always wants to read with her Parent Educator and is able to identify what is happening in the story. She knows all of her letters and numbers, exhibits good English-speaking skills as a dual-language learner, shows great creativity in painting, and has become a more confident student.

Over the past three years, Vannun has formed close relationships with her Parent Educators. Today, Vannun often says, "I love you," to her Parent Educator after a home visit ends and she heads to her car.



Vannun's Next Door Support System



"It has been a joy and honor to see Vannun grow and flourish from a toddler to a preschooler. She greets me at the front door every week, ready to learn. She is bright, caring, creative, and confident in all she does – all qualities that will help her thrive in kindergarten. I am just so proud of her. She is ready for school and I know she is going to do great!"

– Yeng Thao Cooney
Parent Educator, Head Start



"During my time as Vannun's Parent Educator, I was enchanted by her love and interest in reading. Each book was a new adventure that helped her imagination and vocabulary grow. Being able to provide these experiences for her has been so rewarding for me because it has opened doors to endless possibilities. The sky is the limit and I know she is going to reach for the stars."

– Bway Moo
Parent Educator, Early Head Start



"Next Door has helped my daughter grow a lot. She knows her ABC's, 123's, can write her name and is reading where she is supposed to be at for her age. I feel like she is ready for school. I so appreciate what Next Door has been able to do for our family."

– Dawt Zi Hnem
Vannun's mother



High-Quality Programs and Services

Our Child Care Partnership Program

Mateo's Next Door Growth!

At just seven weeks old, Mateo began his early childhood education at Jo's Learning Academy, one of Next Door's Child Care Partnership (CCP) sites across Milwaukee. He attended there through age four, experiencing a strong continuity of care that helped him grow into a successful first grader today!

Mateo attends the Notre Dame School of Milwaukee and engages in a bilingual program learning English and Spanish. His mother reports that he loves school and is showing gains in spelling, reading, writing and math.

His mother credits her son's success in school to the supports he had in place while enrolled in our CCP program at Jo's. For example, Mateo secured developmental services in speech and occupational therapy – all coordinated through resources from Next Door.

Over his time at Jo's, his mother and Next Door staff supporting the family noted his passion for science, nature, building blocks, being a helper, and superheroes! When it came time to transition to his new school, Next Door staff helped the family secure the best place to meet Mateo's needs and set him up for success.



Mateo's Next Door Support System



"Mateo was always one of the first children with his hand raised eager to answer questions during story time and/or during adventure walks. Being in Head Start gave him the confidence and knowledge he needed to be successful in kindergarten."

– Aicila Marrero
Family Advocate Specialist
(Child Care Partnership program)



"Mateo occasionally visits the center now (with two siblings attending) and with much joy and love, we exchange greetings. This is a clear example of the importance of providing continuous service to families and establishing effective relationships."

– Lesvia Gregory
Instructional Coach
(Child Care Partnership program)



"Mateo and his family were one of our regular visitors to our Books for Kids Mobile Library to select books for their home library. I am so glad they shared so many special moments together reading Next Door books and supporting Mateo's development of foundational literacy skills."

– Hannah Molitor
Books for Kids Literacy Specialist



"What put Jo's Learning Academy over the top was the support from Next Door and all of the services they provided together. They really took the time to help Mateo with his writing, his speech and getting him to focus on his work. It has all been beneficial for him in moving on to school at Notre Dame."

– Christina Miller
Mateo's Mother



High-Quality Programs and Services

Our Robust Focus on Literacy and Language

At Next Door, we start early – during the first five years – and strive to build a strong foundation in literacy and language skills. We know our children need this fundamental foundation for their success in school.

Our children build phonemic awareness skills, engage in foundational writing experiences and quality, back-and-forth conversations with teachers, and have ongoing exposure to books across academic disciplines.

We incorporate a variety of literacy and language support for children of all ages, with highlights shared below.

2023-2024 Support

- **90** children supported in speech development through LENA (Language Environment Analysis) technology, which helps identify gaps in children's language skills and incorporate proper supports to accelerate quality dialogue.
- **45** teachers trained in sign language to support early communication skills of our youngest learners, benefiting 160 children overall.
- **20** fellows from The Literacy Lab's Leading Men Fellowship and the 414 Fellowship with AmeriCorps and Marquette University – all supporting literacy and language development of children in our classrooms.
- **30-minute sessions, 2 days a week** of support from our Reading Specialist focused on students who are advancing in literacy.
- **2,553** hours of reading time from volunteers joining our students for Read with Me as part of our Books for Kids program.
- At least **3** free books distributed monthly to each Next Door student as part of Books for Kids.



2023-2024 School Year Outcomes

Agency-Wide

- **1,211** students served
- **179** children supported with special education services
- **1,069** children with updated immunizations
- **100%** of parents supported by a Family Advocate or Parent Educator who empowers parents with resources as their child's first teacher

Our Two Campuses

- **94%** of children met or exceeded developmental expectations for their age in literacy
- **97%** of children in our K4 program met developmental expectations in math concepts such as verbal counting
- **255** families achieved personal/professional goals (ex. financial management, advancing toward homeownership, higher education and securing dentists)

Our Home-Based Program

- **5,479** home visits for families and expecting mothers
- Families served in **8** languages from bilingual staff and translation services (Burmese, Chin, English, Hmong, Igbo, Karen, Rohingya, and Spanish)
- **64** socialization events at Next Door welcoming families for play date-style experiences and educational resources

Our Child Care Partnership Program

- **290** children served through Next Door-style programming at community partnership sites across Milwaukee
- **93%** of children met or exceeded developmental expectations for their age in literacy
- **130** teachers supported by Next Door Instructional Coaches and professional development conferences



Maximizing Access and Impact

Community needs assessments indicate that many young children lack access to critical educational, physical and social-emotional resources needed for healthy development and school-readiness.

Without this access, they are at risk of starting kindergarten as many as 18 months behind their same-aged peers in expected developmental benchmarks.

Next Door strives to maximize access and impact for hundreds of under-resourced children in Milwaukee each year. Our work helps eliminate educational opportunity gaps and ensure children have equitable access to high-quality early education and supportive services.

We stretch our impact even further by supporting families in their transition to elementary school. Our Family Advocates and Parent Educators guide parents toward the strongest school options to meet their child's needs and position them for success.

Next Door's Reach in Milwaukee



*21 Milwaukee area zip codes covered in our home-based program.

Perspectives on Next Door's Impact

Local and national organizations recognize the critical access and impact Next Door is providing in our community and how we are advancing not only the futures of our children but also the future of our workforce. Below is what some of our partners and funders are sharing about Next Door.



Greater Milwaukee Foundation

"Improving the systems needed to provide Milwaukee area families with access to high-quality, affordable early childhood education requires strong partnership and common goals. Next Door has been a generous collaborator in this work – not just with the Greater Milwaukee Foundation but across the community – providing essential care as well as elevating the sector through professional development, shared resources and vocal advocacy for our littlest learners."

– Jeannie Fenceroy
Senior Program Officer



Educare Network

"The Educare Network believes that high-quality early care and education is essential for a future where every child thrives. Educare Milwaukee (at Next Door) is helping to make that future a reality through the learning experiences they provide to children and the partnerships they foster with families. Together we continue to advance our collective vision across the country, ensuring that all children, families, and communities have access to quality early childhood education."

– Dr. Kara H. Ahmed
President



Wisconsin Department of Workforce Development

"Next Door has been a strong apprenticeship partner since 2019 and has played a key role in designing our current Early Childcare Educator apprenticeship program. Their commitment to investing in employees through education and mentorship opportunities is truly commendable. With seven apprentices successfully completing the program, Next Door has the highest completion number of early childhood apprentices in the state and has two active apprentices in the program in 2025."

– Chuck Olsen
Outreach Representative for Emerging Apprenticeship Sectors
(SE Wisconsin)



Commitment to Staff

Just as we provide our students with a comprehensive web of support, we must do the same for our 200+ teachers and staff to support their career development and passion for early childhood education. Below is a look at the extensive support system we provide.

Instructional Coaches



All teachers receive individualized coaching and support with on-the-job feedback and one-on-one sessions.

Family Services Coaches



All Family Advocates and Parent Educators receive support to build their capacity in serving our families' needs.

Male Employee Resource Group



This group provides a supportive space for all male staff members to unite and enjoy fellowship, motivational presentations and recognition of their work.

Success Coach



Employees across Next Door, like Darlene, have benefited from our Success Coach and the personal/professional resources provided for stronger careers and livelihoods.

Workforce Development



We offer all staff free educational opportunities with our Pathways program, which works to strengthen our high-quality workforce and support career growth.

Staff Unity



All staff receive tokens of appreciation during the year from our leadership team, including sweet treats, cards, and recognition of service and performance.

Employee Testimonials

"Working with my Instructional Coach and supervisor all year round played a big role in the development of my teaching process. They helped me build on my skills and implement them in my teaching style. Also, having a male resource group to comfort you and support you throughout the journey has been so valuable for me."



– Hosea Bates
Associate Teacher

"Next Door has allowed me to grow into top professional roles through access to a variety of job opportunities, career guidance and support from my Success Coach. The training and development opportunities have helped me find the best fit for my skills and goals, which allows me to drive my team, children and families forward to tremendous success."



– Tanisha Johnson
Director of Educational Services, Early Head Start

"Being a Parent Educator has taught me that advocacy for early intervention and education is so important. With tremendous support from my supervisor and professional development opportunities at Next Door, I've learned techniques on how to communicate the importance of early intervention and education to best serve my families in the home-based program."



– Marlee Lor
Parent Educator

"Next Door has shaped my career success by providing effective trainings and knowledgeable staff who were able to train and onboard me so that I could be successful in each job opportunity that I have embarked on here. This in-house motivation pushes me to invest in my current team, children, and families for a lifetime of success."



– Tomeka Jones
Director of Student Support Services

"The opportunities, resources and support from Next Door have all empowered me with professional development and career growth. Next Door paid for my education to advance to a Lead Teacher and provides trainings and educational coaches to further enhance my skills. The excitement of feeling appreciated by Next Door is enough to motivate me to teach in our community."



– Paris McDuffie
Lead Teacher

"I feel that I am really growing as a teacher at Next Door. All of the help that I have received from my coaches, Education Managers and amazing co-workers has not been like anything I have ever had before working at a job. I really love what I do and I am so grateful for Next Door."



– John Rodgers
Assistant Teacher

Community Engagement

Through community engagement, we create a village of support that we surround our children and families with year after year. Joining our team members are more than 30 local, state and national partnership organizations that help us maximize the impact of the Next Door experience for each child and their family.

- ACTS Housing • African American Breastfeeding Network
- AmeriCorps • Aurora WIC Site • Carroll University
- Children's Wisconsin • City of Milwaukee Office of Early Childhood Initiatives
- Clayton Early Learning Academy – EMBRACE • DentaMed • Educare Network
- Employ Milwaukee • Fathers Making Progress
- Heal the Hood • House Of Peace • Hunger Task Force • Ignite Child Development Services
- LENA • Marquette University Service • Marquette University Speech and Language Department
- Medical College of Wisconsin School of Pharmacy • Milwaukee Area Technical College
- Milwaukee Coalition for Children's Mental Health (part of Mental Health America of Wisconsin)
- Milwaukee Diaper Mission • Milwaukee Justice Center Mobile Legal Clinic
- Milwaukee Public Schools • Milwaukee Succeeds • Next Step Clinic • Novir
- Parenting Network • River Works Development Corporation
- School Community Partnership for Mental Health (part of Children's Wisconsin)
- The Literacy Lab and Leading Men Fellows
- United Way of Greater Milwaukee and Waukesha County • University of Wisconsin-Milwaukee
- University of Wisconsin-Oshkosh • UPAF Connect • Wellpoint Care Network
- Wisconsin Conservatory of Music • Wisconsin Department of Workforce Development



Celebrating Partnership Milestones!

Next Door has been engaged in strong partnerships for decades. In 2025, we will mark major anniversaries of three partnerships highlighted below. We offer much gratitude for all of their long-standing organizational support.

60th Anniversary of Head Start

The students at Next Door are among more than 38 million children nationwide who have been served by the Office of Head Start since its founding in 1965.

We partner with the Office of Head Start to implement high-quality education to support the early childhood needs of under-resourced families in Milwaukee.

This federal agency provides Next Door with significant operational funding annually, valuable expertise in our field, and high standards for educational benchmarks and compliance.



20 years of Educare at Next Door

Next Door began its partnership with the Educare Network in 2005 and remains the only Wisconsin organization affiliated with the national network.

The network provides a best-practices model – rooted in research – for serving young children from under-resourced communities.

We incorporate this high-quality model across all of our programs, while also gaining valuable access to the network's latest research in our field and to professional development for staff.



35 Years of Books for Kids at Next Door

Since 1990, Next Door's Books for Kids program has distributed more than one million free books to our students and children across Milwaukee to help build their home libraries.

This program would not exist without the generous support of volunteers who donate books, host book drives, prepare books for distribution, and read with our children for Read with Me.

All of these contributions help Next Door grow early literacy skills of children and family engagement in reading.



Community Engagement

We are grateful for the generous financial contributions of our donors, including individuals, families, community foundations and corporations. Your gifts supported our high-quality early childhood education programming, family support services and workforce development initiatives. Here we recognize all new gifts and pledge installments made between January 1 and December 31, 2024.

\$250,000+

Buffett Early Childhood Fund
United Way of Greater Milwaukee
and Waukesha County

\$100,000 - \$249,999

Herzfeld Foundation
PNC Foundation
A grant supporting family services
through the Educare Network

\$75,000 - \$99,999

Northwestern Mutual Foundation

\$50,000 - \$74,999

A Friend of Next Door
Bader Philanthropies
Brady Corporation Foundation
Helwig Carbon Products
Herb Kohl Philanthropies
Brook Lopez and the National
Basketball Players Association
Foundation
West Bend Community
Foundation's West Bend
Mutual Insurance Company
Charitable Fund

\$25,000 - \$49,999

Greater Milwaukee Foundation –
Roller Family Fund
Joan and Fred Brengel Family
Foundation
Mary and Ted Kellner
Mr. Robin B. Lopez and
Mr. Rit Veneru
Molly and Michael Shapiro Family
Foundation
PwC Charitable Foundation, Inc.
Red Nose Day Fund
at Comic Relief US
Paul and Kathleen Roller



Shirley M. & Roger H. Schroeder
Schulz Family Fund
Richard and Anna Teerlink
Walbec Group

Thank you, Karen!

After retiring as a school social worker, Karen Zimmerman still wanted a connection with young children in her life. In 2019, she found that connection at Next Door where she volunteers twice a week and is also a generous donor with her husband.

Karen reads to our children in our libraries and classrooms and helps prepare books for distribution to our children to grow their home libraries. "Just sharing the excitement of a book is something that warms my heart."

Over time, Karen has watched her reading buddies grow from babies to preschool students. She loves observing that growth and how Next Door impacts the entire family.

"It's not just the child but that level of support for the family. If you can support the families at home, that's where a lot of learning and development will happen."



\$10,000 - \$24,999

A Friend of Next Door
American Family Dreams
Foundation
Donald and Donna
Baumgartner
Steven and Melanie Booth
Four-Four Foundation
Greater Milwaukee Foundation
John C. and Harriett Cleaver
Fund
Kathy's Parenting Fund
Hepburn "Bootstrap" Foundation
Jane Bradley Pettit Foundation
Kathy and Ian Lambert
Matthew and Brenda Levatic
Nancy M. and Douglas M.
Yeager Family Foundation
Marian and Bill Nasgovitz
Lynn Nicholas
Ann Pieper Eisenbrown
Richard and Suzanne Pieper
PieperPower
U.S. Bank Foundation
We Energies Foundation
Weiss Family Foundation
William Stark Jones Foundation
William T Peche "Building
Brighter Futures" Charitable
Fund
Zurn Foundation

\$5,000 - \$9,999

A.O. Smith Foundation
Kay and Fred Austermann
Lynn and Charles Barney
John and Maija Bentley
Bert L. and Patricia S. Steigleder
Charitable Trust
BMO Bank, NA
John Brandser
Charles D. Jacobus Family
Foundation
Sigrid Dynek
Claire Fritsche
Greater Milwaukee Foundation
Hope H. Anderson Fund
Lawlis Family Fund
Mainman Family Fund
Linda and Michael Groth
Elizabeth Hauske
Trish Hilbert
Peter Hitler
Mark and Jan Homan
Jacqueline and Gregory Johnson
Donald and Erica Kieffer
Alice Marchione
David Pritchard and
Kathleen Rogers
Christine Radiske and
Herbert Quigley

Bob and Brenda VanHimbergen
William N. and Janice V. Godfrey
Family Foundation Trust
James and Yvonne Ziemer

\$2,500 - \$4,999

Joan Aker
Baird Foundation
Meg Brzyski Nelson
Linda and John Mellowes and
Charter Mfg. Co.
Crysdahl Foundation
Joanne Danforth and
Stewart Edwards
Sue and Thomas Doyle
Brian Dubowski
Ernest and Sally Micek Family
Foundation
Executive Women International
Robert Ferriday and
Barbara McMath
Michelle Fiedler
Mark and Holly Filmanowicz
Greater Milwaukee Foundation
Chris M. Bauer Fund
Dyar Fund
Georgiana and Robert Taylor
Fund
Green Bay Packers Foundation

Greendale Community Theater
Harley-Davidson Motor Company
Johnson Controls Foundation
Kelben Foundation
James and Camilla Levin
Linda and John Mellowes
Molly Mulroy
Mr. and Mrs. Kevin P. O'Neill
Larry and Jeanne Prochnow
Mason and Julie Ross
Wendy and Jason Schueller
Drs. David Shapiro and
Jane Hawes
Terri and Neil Siegel
Timothy and Nancy Speaker
Florence Steinberger
Townsend Foundation
WEC Energy Group
John and Lisa Wilson
Linda Yeager and John Florsheim
Elisabeth and Edward Yewer
Zurn Elkay Water Solutions

Thank you, Chris!

Every Tuesday morning, you will find Chris Robinson visiting Next Door to read with our children at our Capitol Drive campus. He joins our children for Read with Me, spending two hours reading books to them in our library or classrooms.

Chris first learned of Next Door while listening to a radio report about book drives for Next Door. He decided to donate some books that his daughter had outgrown, and through that experience, discovered the opportunity to volunteer for Read with Me.

It was perfect match with Chris' passion for building literacy development for young children. Over his time with Next Door, he has formed strong relationships with the students, observed their growth and shared many memorable moments together.

"It feels like you're giving back but they in turn are also giving you something. These children really just bring a true joy to you."



\$1,000 - \$2,499

A Friend of Next Door
Albert J. & Flora H. Ellinger Foundation
Thomas and Diane Arenberg
John Barrett
William Blair
Thomas and Elissa Bolger
Joan and Peter Bruce
Catholic Memorial High School
Ortgiesen Family Foundation
Christin Cleaver
Mary and James Conlon
Vicky and Benjamin Cordani
Cristina and Jeff Crogan
Mark Drow
Kevin Duvalle and Fred Lueneburg
Eileen & Howard Dubner Donor
Advised Fund of the Jewish Community Foundation of the Milwaukee Jewish Federation
Carole and Adam Glass

Stephen Fischer
Claudia Francis and Thomas Jensen
George and Cindy Moore Giving Fund
Greater Milwaukee Foundation
Asher and Susan Nichols Family Fund
Bessie A. and Harold M. Stratton Fund
Stern Family Fund
Ildy and Skip Poliner Fund
Joan and Peter W. Bruce Fund
Joseph and Laura Mantoan Fund
Lisa Berman Fund
Randall Family Fund
Steven Gorzek
Greater Milwaukee Association of Realtors Youth Foundation
Greendale Community Church
Ann and Jon Hammes

Judy Hauser
Bradley Jansen
Sally Jarrar Baumgartner
Jewish Community Foundation – Anne & Stephen Kravit Donor Advised Fund
Benjamin and Eileen Kelly
Hans and Ellen Kirkegaard
Jason and Terri Klein
Jason and Dawn Koenitzer
Marja and Jeff Koenitzer
Joyce Koenitzer
Mary Ann and Charles LaBahn
Timothy Larson
Linda & Barry Allen Foundation
Katherine Luck
Diane McGinn
Heather Mehring Grams
Susan Mischler
Erin Murray Butler and Thomas Butler
Christopher Nichols

North Shore Bank – Brookfield Square
Gregory and Rhonda Oberland
Elaye Okunseri
Ozaukee Congregational Church
Paul F. and Lois K. Heiss Family Foundation
Bruce and Mary Ellen Pindyck
Amy and John Rislov
Ruth M. Ritter
Donald and Marsha Roecker
Gayle Rosemann and Paul McElwee
Elizabeth and David Scalf
Anjali Sharma
Daniel and Jayme Sisel
SixSibs Foundation
Thomas and Iphigenia Smith
A.J. Star
Robert and Ellen Venable
Jack and Hester Werner
Jessica Ziegler

Thank you, Brad!

At the end of 2024, Brad Jansen completed his term as President of Next Door’s Board of Directors. He joined the board in 2015 and discovered a place he instantly desired to serve.

“All of the sudden you have this oasis, vibrant colors, kids smiling...you don’t forget that.”

Brad served on the board’s Administration and Finance Committee, became chair of that committee and transitioned to President in 2021. Some of his proudest work was approving measures supporting Next Door’s workforce, including new benefits, health insurance cost control, and raising the minimum wage.

He has volunteered for Read with Me and helped organize pro-bono work from his company, PwC, to support Next Door operations. He says the significant impact of Next Door in our community has always driven his motivation to serve. “The impact that you see makes you continue to be all-in.”

Next Door is grateful for Brad’s leadership, marked by passion, wisdom, intentionality and care.



\$500 - \$999

A Friend of Next Door
Allstate Benefits
Atkinson/Ells Charitable Foundation
Boswell Book Company
Paul and George Ann Casper
Stephen Chitwood
Walter and Aleta Chossek
Rebecca Cook
Judith Croak
Gloster and Yvonne Current
Halli and Mark Czarnecki
James, Marygrace, and Gigi Darby
Darren Davis and Bryna Goeckner
Fred and Rosanna DeBoe
Sandra Eaton
Nancy File and James Beer
Jill and Greg Gardoet

Greater Milwaukee Foundation
Bechthold Family Fund
Susan D. Mischler Fund
Cottrell/Jacobs and Housiaux Family Fund
Todd and Kathleen Gordon
Ginny Gribble



Dr. Susan E. Gruber
Nick Heger
Michele and John Hepp
Dennis Hoffman
Jodi Houlberg
Kathryn and John Housiaux
Jenny Irwin
Robert and Sarah Jansen
Thomas and Pauline Jeffers
Susan Kasten
Mark and Sara King
Gerhard Kohlmann
Joseph Lorbert
Miriam Mastrianni
Edgar Mayorga
Bill and Stacy M. McKearn
Marilou and Peter Melcher
The Nicholas R. Rizzi Foundation
Maureen Post
W. David and Gael T. Romoser

Jack Rosenblatt
Lynn M. Rix
Leslie Hauser and Karl Wuesthoff Fund
Sean and Sara Scullen
Catherine Shaw and Robert Storm
Elisabeth Shock
Andrew Sprunger
Elizabeth Thuli
United Methodist Church of Whitefish Bay
John Wais
Joseph and Ann Wenzler
William and Gwendolyn Werner
Elaine Willis
Dr. James and Gracia Willis
Nancy Ytre
Karen and Rob Zimmerman

The Importance of Your Giving – Greatest Needs

All of the contributions highlighted here not only help build strong foundations for our children but they are critical for Next Door to tap into significant federal funding each year to keep our programming operating at its best.

Next Door receives funding through grants from the federal Office of Head Start that requires us to match a portion of the funds provided. For every \$1 we receive in federal funding, we must fundraise 25 cents. Philanthropic gifts supporting our greatest needs are key contributors to the match, creating one of the best ways to support our organization’s mission.

Not only does philanthropy contribute to our required match, so to does volunteer engagement. For every hour a volunteer comes to Next Door for Read with Me with our children, for example, we can access \$24.48 in federal funding.

Please consider both making a gift to support our greatest needs and volunteering your time. We hope we can count on you to support us in such a pivotal way – helping Next Door maximize our federal grant funding and deliver the most impactful early childhood experience for our little ones. Thank you!



Scan the QR code to give today, or email us to learn more at donations@NextDoorMKE.org.



Scan the QR code to learn more about volunteering or email us at volunteer@NextDoorMKE.org.



More ways to connect at: NextDoorMKE.org/Support-Next-Door/

Financial and Resource Stewardship

2023-2024 Operating Revenue

Year Ended June 30, 2024

Operating Revenues	Amount	Percentage
Federal & State	\$20,057,344	78%
Private Contributions	\$4,414,165	17%
Other	\$545,621	2%
In-Kind Goods & Services	\$711,547	3%
Total Revenues	\$25,728,677	100%

2023-2024 Operating Expenses

Year Ended June 30, 2024

Operating Expenses	Amount	Percentage
Personnel	\$13,459,704	53%
Fringe Benefits	\$3,554,734	14%
Travel & Training	\$316,798	1%
Occupancy	\$1,724,198	7%
Equipment & Supplies	\$1,067,004	4%
Contractual	\$2,489,957	10%
Support Services	\$1,108,102	4%
Depreciation	\$745,293	3%
Interest	\$286,939	1%
In-Kind Goods & Services	\$711,547	3%
Other	\$100,025	0%
Total Expenditures	\$25,564,301	100%



Next Door Board of Directors

Molly Mulroy, Chair
WEC Energy Group

Bradley Jansen, CPA, CFE, Ex Officio Board Chair
PricewaterhouseCoopers

Wendy Schueller, Vice Chair
Robert W. Baird & Co., Incorporated

Dan Sisel, Treasurer
Marquee Capital

Mark Filmanowicz, Secretary
The Walbec Group

Heather Mehring Grams
President, Next Door

Toshiba Adams
Milwaukee Area Technical College,
University of Wisconsin-Milwaukee

Paul Bee
Milwaukee Bucks

Jeb Bentley
Northwestern Mutual

Stephen Chitwood
BMO

Rebecca Cook
ManpowerGroup

Ebony Green
Head Start Parent Representative

Jason Klein
BMO Wealth Management-Private Bank

Kyongboon Kwon, Ph.D.
University of Wisconsin-Milwaukee

Dessie Levy, Ph.D., RN, APN
Community Advocate

Edgar Mayorga
Johnson Controls, Inc.

Meg Brzyski Nelson
Children's Wisconsin

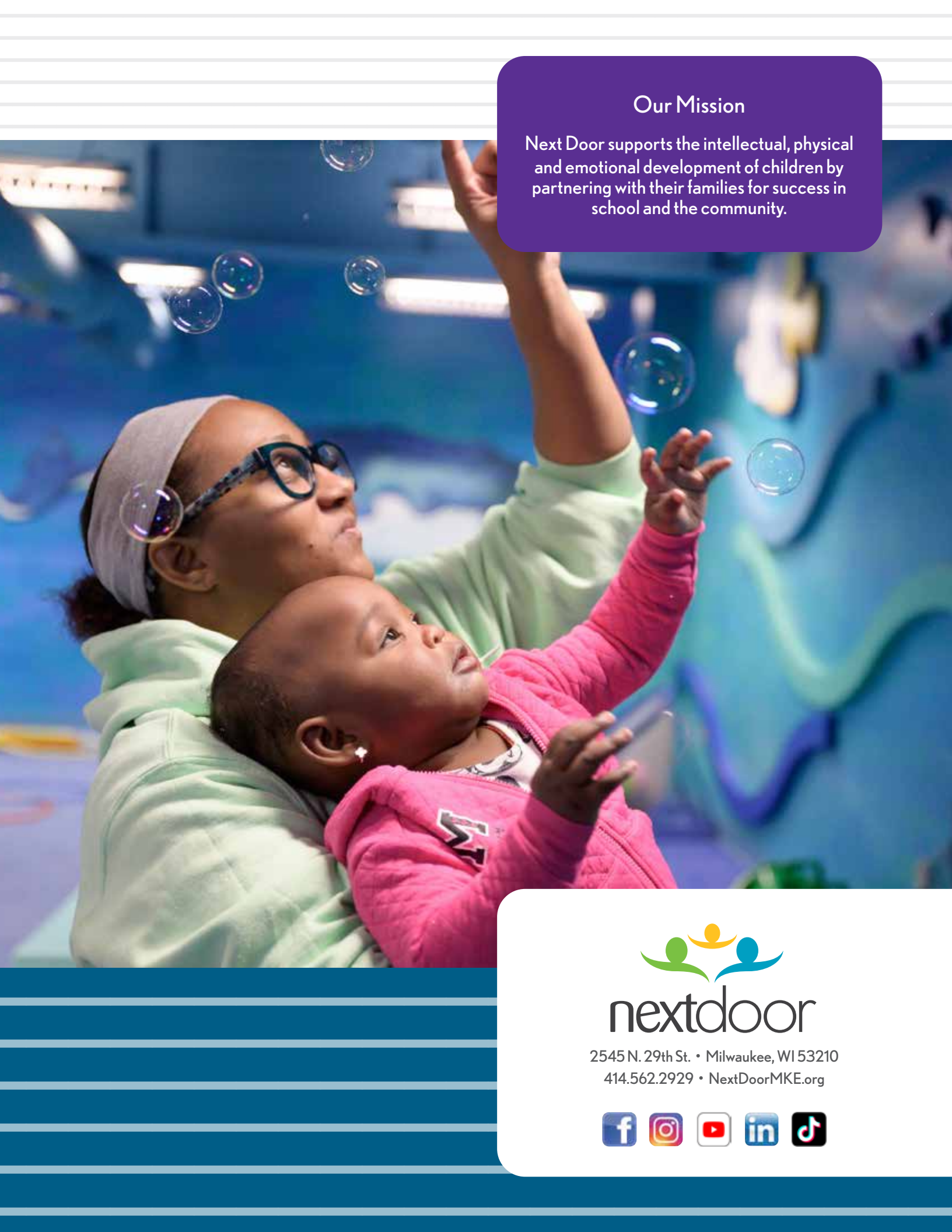
Dr. Brilliant Nimmer
Children's Wisconsin/Children's Medical Group

Elaye Okunseri
DentaMed

Amy Rislov
Network Health

Sean Scullen
Quarles & Brady





Our Mission

Next Door supports the intellectual, physical and emotional development of children by partnering with their families for success in school and the community.



nextdoor

2545 N. 29th St. • Milwaukee, WI 53210

414.562.2929 • NextDoorMKE.org

